



## Slim Moulded



**Standard of Compliance**  
BS EN 60669-1

**Mounting Boxes**  
• 16mm (1 & 2 gang plates)  
• 25mm (3-6 gang plates)

### 10AX Light Switches

List No.	Description	Pack Qty
P-SP611	1 gang 1 way	10
P-SP612	1 gang 2 way	10
P-SP622	2 gang 2 way	10
P-SP632	3 gang 2 way	10
P-SP642	4 gang 2 way	5
P-SP662	6 gang 2 way	5
P-SP6INT	1 gang intermediate	10
P-SP6FAN	3 pole 'fan' isolator	10
P-SP6PRS	Push retractive switch	10
P-SP6BELL	Bell switch	10
P-SPDPKY	1 gang DP key switch	10
P-SP12KY	1 gang 2 way key switch	10
P-SPDPEL	1 gang DP 2 way key switch marked emergency lighting	10
P-SP12EL	1 gang 2 way key switch marked emergency lighting	10



**Standard of Compliance**  
BS 60669-1

### 10AX Switch Modules

List No.	Description	Pack Qty
P-SMINT	Intermediate switch module	10
P-SM12KY	Key switch module	10
P-SM12EL	2 way key switch module marked emergency lighting	10
P-SMDPKY	DP key switch module	10
P-SMDPEL	DP key switch module marked emergency lighting	10

See page **46 - 49**  
for **MATRIX20 Grid System**



**Standard of Compliance**  
BS EN 60669-2

**Type**

• Leading Edge

**Mounting Boxes**

• 35mm deep (a 10mm spacer frame can be supplied, enabling this unit to fit a 25mm deep backbox)

### 240V Dimmer Switches

List No.	Description	Pack Qty
P-DS412P	1 gang 2 way 400W push	10
P-DS422P	2 gang 2 way 400W push	10
P-DS432P	3 gang 2 way 400W push	5
P-DS442P	4 gang 2 way 400W push	5

Suitable for mains & low voltage lighting. When using with LED lighting check with the manufacturer for compatibility prior to installation. **Specific Niglon LED Dimmer module available on page 47.**



**Standard of Compliance**  
BS EN 60669-1

**Mounting Boxes**

• 25mm deep

**Note**

\* Flex outlet plates 10mm deep to allow bottom cable exit.

### 20A DP Switches

List No.	Description	Pack Qty
P-SP20DP	20A DP switch	10
P-SP20DPN	20A DP switch with neon	10
*P-SP20DP-BF	20A DP switch with flex outlet in base	10
*P-SP20DPN-BF	20A DP switch with neon & flex outlet in base	10



**Standard of Compliance**  
BS EN 60669-1

**Mounting Boxes**

• 47mm deep

### 45A DP Switches

List No.	Description	Pack Qty
P-SP45DP	45A DP red rocker single plate	10
P-SP45DPN	45A DP red rocker with neon single plate	10
P-SP45LDP	45A DP red rocker double plate	5
P-SP45LDPN	45A DP red rocker with neon double plate	5
P-SP45DP-WH	45A DP white rocker single plate	10
P-SP45DPN-WH	45A DP white rocker with neon single plate	10
P-SP45LDP-WH	45A DP white rocker double plate	5
P-SP45LDPN-WH	45A DP white rocker with neon double plate	5





## Slim Moulded



**Standard of Compliance**  
BS 1363 with BS 1362 fuse

**Mounting Boxes**  
25mm deep

**Note**  
\* Flex outlet plates 10mm deep  
to allow bottom cable exit

### 13A Fused Connection Units

List No.	Description	Pack Qty
P-FS13	13A fused connection unit	10
P-FS13N	13A fused connection unit with neon	10
P-FS13DP	13A switched fused connection unit	10
P-FS13DPN	13A switched fused connection unit with neon	10
*P-FS13DP-BF	13A switched fused connection unit with flex outlet in base	10
*P-FS13DPN-BF	13A switched fused connection unit with neon & flex outlet in base	10



**Standard of Compliance**  
BS4177

**Mounting Boxes**  
• 47mm deep

### 45A Cooker Control Unit & Outlet Plate

List No.	Description	Pack Qty
P-CC45DP	45A DP red rocker cooker control unit with 13A socket	5
P-CC45DPN	45A DP red rocker cooker control unit with neon & 13A socket	5
P-CU45	45A Cooker Outlet Plate	10
P-CC45DP-WH	45A DP white rocker cooker control unit with 13A socket	5
P-CC45DPN-WH	45A DP white rocker cooker control unit with neon & 13A socket	5



**Standard of Compliance**  
BS 1363

**Mounting Boxes**  
• Min 25mm deep

• All 2 gang socket outlets have  
2 earth terminals as standard

### 13A Socket Outlets

List No.	Description	Pack Qty
P-S131S	1 gang SP switched	10
P-S132S	2 gang SP switched (twin earths)	5
P-S131DPS	1 gang DP switched	10
P-S132DPS	2 gang DP switched (twin earths)	5
P-S131DPSN	1 gang DP switched with neon	10
P-S132DPSN	2 gang DP switched with neon	5



**Mounting Boxes**

• 35mm deep (a 10mm spacer frame is available, enabling this unit to fit a 25mm deep backbox) see note.

**Smart USB**

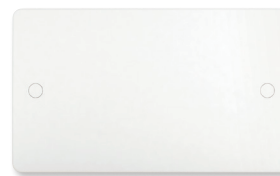
• Standby when device is fully charged  
• Detects USB devices & adjusts charging  
• Protects the devices in the event of an overload

**Note**

• All 2 gang socket outlets require 25mm deep back boxes

### 13A Socket Outlets with USB

List No.	Description	Pack Qty
P-131USB	1 gang switched with 2.1A USB port	10
P-132USB-3	2 gang switched with 1 x 2.1A & 1 x 1A USB ports	5



**Standard of Compliance**  
BS 5733

### 20A Flex Outlet Plate & Blank Plates

List No.	Description	Pack Qty
P-CU20	20A flex outlet plate with front exit	10
P-BP1	1 gang blanking plate	10
P-BP2	2 gang blanking plate	10



### Spacer Frames

List No.	Description	Pack Qty
P-SF1	10mm 1 gang spacer frame	10
P-SF2	10mm 2 gang spacer frame	10

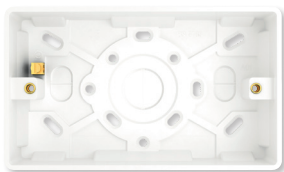
**PROFILE** Brochure

Contact the sales team  
to request your copy today





## Slim Moulded



**Standard of Compliance**  
BS 5733

### Urea Moulded Mounting Pattress

List No.	Description	Pack Qty
P-SPB161	1 gang 16mm + earth terminal pattress	10
P-SPB251	1 gang 25mm pattress	10
P-SPB252	2 gang 25mm pattress	5
P-SPB351	1 gang 35mm pattress	10
P-SPB352	2 gang 35mm pattress	5
P-SPB471	1 gang 47mm + earth & cable clamp pattress	10
P-SPB472	2 gang 47mm + earth & cable clamp pattress	5



**Standard of Compliance**  
BS EN 61558  
230V input with  
230V & 115V outlets  
**Mounting Boxes**  
• 47mm deep

### Shaver Socket

List No.	Description	Pack Qty
P-DVSS	Dual volt shaver socket 20VA	1



**Mounting Boxes**  
• 10A 25mm deep  
• 32A 47mm deep

### Key Card Switches

List No.	Description	Pack Qty
P-SP6KEY10	10A key card switch	1
P-SP6KEY32	32A key card switch	1



**Standard of Compliance**  
BT Sockets comply with BS EN 6312-2  
BT Type push-in terminals  
**Mounting Boxes**  
• BT - 25mm deep  
• Data - 35mm deep

### Telephone & Data Outlets

List No.	Description	Pack Qty
P-BT1-M	1 gang BT outlet master	10
P-BT1-S	1 gang BT outlet secondary	10
P-BT2-M	2 gang BT outlet master	10
P-BT2-S	2 gang BT outlet secondary	10
P-DS15	1 gang Cat. 5 outlet	10
P-DS25	2 gang Cat. 5 outlet	10
P-DS16	1 gang Cat. 6 outlet	10
P-DS26	2 gang Cat. 6 outlet	10



**Standard of Compliance**  
TV Outlets Comply with BS 3041  
Satellite Outlets Comply with BS EN 50083-2  
**Mounting Boxes**  
• 25mm deep

### Co-Axial & Satellite Sockets

List No.	Description	Pack Qty
P-TV1	1 gang TV/FM socket	10
P-TV2	2 gang TV/FM socket	10
P-TV1-ISO	1 gang isolated TV/FM socket	10
P-TV2-ISO	2 gang isolated TV/FM socket	10
P-TV+SAT	2 gang TV+satellite socket	10
P-SAT1	1 gang satellite socket	10
P-SAT2	2 gang satellite socket	10
P-SAT1-45	1 gang 45° angled satellite socket	10

See page **44 - 45**  
for **Telecom, Data**  
& **Co-axial** options

