

niGLON

PREMIUM
EDGE

Slimline Decorative
Wiring Accessories Range



Introducing

The Premium Edge Range

A comprehensive, modern, ultra-slim, decorative, metal-plated accessory range finished in brushed and polished chrome with white or black inserts.

Premium Edge switches and sockets are one of our most popular ranges, offering a sophisticated look and a comprehensive selection of products to suit almost all applications.

Simple to upgrade from standard sockets, making any room instantly more elegant. A great choice for domestic or commercial applications where quality and durability are required, but without compromising on aesthetics.

Now read more about all the features that help make this range stand out from the crowd.



Low Profile

4mm thick faceplates result in subtle products that will be highly practical in their use but unassuming in their location.



Coloured Inserts

Two subtle insert colours; black and white are available in this range, designed to sit neatly alongside the brushed and polished chrome finish of the faceplates, guaranteed to compliment any style of interior.



USBs

Smart USB socket outlets are able to detect USB devices when plugged in and adjusts charging current, turn to standby when device is fully charged and have the ability to protect the devices in the event of an overload.

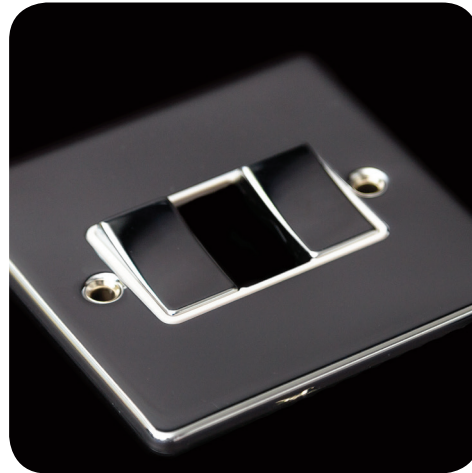
Product Features

Unique & Practical



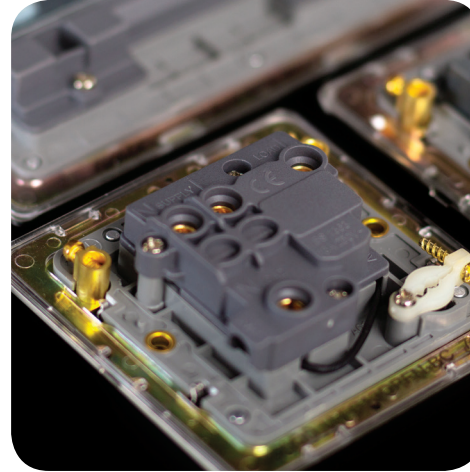
On Status

Where applicable flush red neon indicators have been fitted, giving a clean sophisticated look to the range. The use of neon is unobtrusive in daylight and produces a soft glow in the dark.



Modular Switches

All 10AX light switches are constructed using a highly adaptable modular design, allowing reconfiguration on site, without the need for a full grid system.



Edge to Edge Gasket

Concealed edge to edge gasket to prevent tarnishing of the plate where moisture is present during installation, such as on freshly plastered or painted walls.



Guarantee

This range is manufactured using high quality electrical components and materials, backed up with a 20 year guarantee*, giving you the confidence that these switches will stand the test of time.

*2 year guarantee on electronic products.

10AX Light Switches

White Urea

****** To order a white insert please add 'W' at the end of the product code. If you would like a black insert use the code as it is shown.

Standard of Compliance

BS EN 60669-1

Mounting Boxes

25mm deep



Polished

D-SP612-PC**

Brushed

D-SP612-BC**

Description

1 Gang 2 Way

D-SP622-PC**

D-SP622-BC**

2 Gang 2 Way

D-SP632-PC**

D-SP632-BC**

3 Gang 2 Way

D-SP642-PC**

D-SP642-BC**

4 Gang 2 Way



D-SP662-PC**

D-SP662-BC**

6 Gang 2 Way



D-SP6INT-PC**

D-SP6INT-BC**

1 Gang Intermediate



D-SP6FAN-PC**

D-SP6FAN-BC**

Fan Isolator

240V Dimmer Switches

Brushed or Polished Chrome

Suitable for mains & low voltage lighting

When using LED lighting check with the manufacturer for compatibility prior to installation.

Standard of Compliance

BS EN 60669-1

Mounting Boxes

35mm deep min

Type

Leading Edge



Polished

D-DS412P-PC

Brushed

D-DS412P-BC

Description

1 Gang 2 Way 400W Push



D-DS422P-PC

D-DS422P-BC

2 Gang 2 Way 400W Push



D-DS432P-PC

D-DS432P-BC

3 Gang 2 Way 400W Push

Blanking Plates

Brushed & Polished Chrome



D-DS442P-PC

D-DS442P-BC

4 Gang 2 Way 400W Push



D-BP1-PC

D-BP1-BC

1 Gang Blank Plate



D-BP2-PC

D-BP2-BC

2 Gang Blank Plate

Polished

Brushed

Description

13A Fused Connection Units

Brushed or Polished Chrome

****** To order a white insert please add 'W' at the end of the product code. If you would like a black insert use the code as it is shown.

Standard of Compliance
BS 1363 with BS 1362 fuse

Mounting Boxes
25mm deep



Polished

D-FS13-PC**

Brushed

D-FS13-BC**

Description

Unswitched Fused Connection Unit

D-FS13N-PC**

D-FS13N-BC**

Unswitched Fused Connection
Unit with Neon Indicator

D-FS13DP-PC**

D-FS13DP-BC**

Double Pole Switched
Fuse Connection Unit

D-FS13DPF-PC**

D-FS13DPF-BC**

Double Pole Switched Fuse
Connection Unit with Flex Outlet



D-FS13DPN-PC**

D-FS13DPN-BC**

Double Pole Switched Fuse Connection
Unit with Neon Indicator



D-FS13DPFN-PC**

D-FS13DPFN-BC**

Double Pole Switched Fuse Connection
Unit with Flex Outlet & Neon Indicator

****** To order a white insert please
add 'W' at the end of the product
code. If you would like a black
insert use the code as it is shown.

Standard of Compliance

BS EN 61558

230V input with
230V & 115V Outlets

Mounting Box

47mm deep

Shaver Sockets

Brushed & Polished Chrome



Polished

Brushed

Description

D-DVSS-PC**

D-DVSS-BC**

Shaver Socket 230/115V

5A & 13A Socket Outlets

Brushed or Polished Chrome

****** To order a white insert please add 'W' at the end of the product code. If you would like a black insert use the code as it is shown.

Standard of Compliance

BS 1363
(BS EN 61558 Floor Sockets)

Mounting Boxes

25mm deep
(USB & floor socket outlets require 35mm deep back boxes)

Smart USB

- Standby when device is fully charged
- Detects USB devices & adjusts charge
- Protects devices in the event of an overload

Note

- All 2 gang socket outlets have 2 earth terminals as standard
- Floor sockets use 50mm x 50mm Euro Module kits



Polished

D-S51-PC**

Brushed

D-S51-BC**

Description

1 Gang 5A Unswitched Socket

D-S131DPS-PC**

D-S131DPS-BC**

1 Gang Double Pole Switched

D-S131USB-PC**

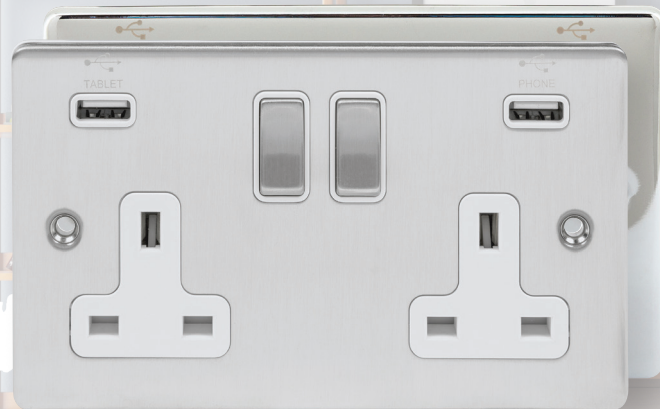
D-S131USB-BC**

1 Gang Double Pole Switched
with 2.1A USB Port

D-S132DPS-PC**

D-S132DPS-BC**

2 Gang Double Pole Switched (Twin Earth)



D-S132USB-PC**

D-S132USB-BC**

2 Gang Double Pole Switched with 1 x 2.1A & 1 x 1A USB Ports



Available in Brushed Chrome Only

D-FS131-BC

1 Gang Unswitched Floor Socket
Available with Black Insert Only



Available in Brushed Chrome Only

D-FS132-BC

2 Gang Unswitched Floor Socket
Available with Black Insert Only

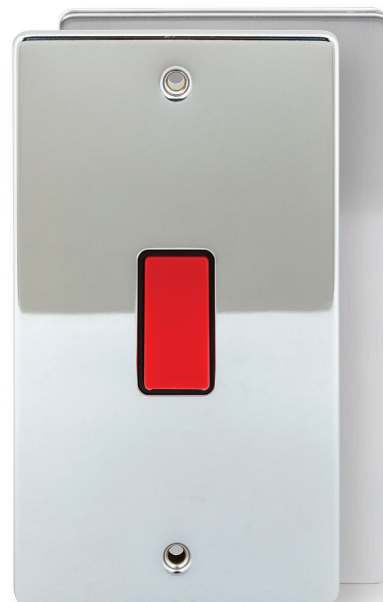
45A Double Pole Switches

Brushed & Polished Chrome

****** To order a white insert please add 'W' at the end of the product code. If you would like a black insert use the code as it is shown.

Standard of Compliance
BS EN 60069-1

Mounting Box
47mm deep



Polished

D-SP45DP-PC**

Brushed

D-SP45DP-BC**

Description

45A Double Pole Switch

D-SP45DPN-PC**

D-SP45DPN-BC**

45A Double Pole Switch with Neon

D-SP45LDP-PC**

D-SP45LDP-BC**

45A Double Pole Switch Double Plate

D-SP45LDPN-PC**

D-SP45LDPN-BC**

45A Double Pole Switch with
Neon Indicator Double Plate



****** To order a white insert please add 'W' at the end of the product code. If you would like a black insert use the code as it is shown.

45A Cooker Control Unit

Brushed or Polished Chrome

Standard of Compliance
BS 4177

Mounting Boxes
47mm deep



Polished

D-CC45DPN-PC**

Brushed

D-CC45DPN-BC**

Description

45A Double Pole Cooker Control Unit
with Neon Indicator & 13A Socket

20A Double Pole Switches

Brushed or Polished Chrome

****** To order a white insert please add 'W' at the end of the product code. If you would like a black insert use the code as it is shown.

Standard of Compliance
BS EN 60669-1

Mounting Boxes
25mm deep



Polished

D-SP20DP-PC**

Brushed

D-SP20DP-BC**

Description

20A Double Pole Switch



D-SP20DPN-PC**

D-SP20DPN-BC**

20A Double Pole Switch
with Neon Indicator



D-SP20DPF-PC**

D-SP20DPF-BC**

20A Double Pole Switch with
Flex Outlet & Neon Indicator

****** To order a white insert please add 'W' at the end of the product code. If you would like a black insert use the code as it is shown.

Outlet & Euro Plates

Brushed & Polished Chrome



Polished

D-CU20-PC**

Brushed

D-CU20-BC**

Description

20A Flex Outlet Plate
with Front Exit



D-MP12-PC**

D-MP12-BC**

1 Gang Data Plate 2 Modules



D-MP24-PC**

D-MP24-BC**

2 Gang Data Plate 4 Modules

Media Outlets

Brushed or Polished Chrome

Standard of Compliance

Telephone sockets
comply with BS EN 6312-2

Mounting Boxes

Telephone - 25mm deep
Data - 35mm deep

****** To order a white insert please add 'W' at the end of the product code. If you would like a black insert use the code as it is shown.



Polished

D-BT1M-PC**

Brushed

D-BT1M-BC**

Description

1 x Telephone Master Outlet

D-BT1S-PC**

D-BT1S-BC**

1 x Telephone Secondary Outlet

D-DS15-PC**

D-DS15-BC**

1 x Cat. 5 Data Outlet

D-DS25-PC**

D-DS25-BC**

2 x Cat. 5 Data Outlet



D-DS16-PC**

D-DS16-BC**

1 x Cat. 6 Data Outlet



D-DS26-PC**

D-DS26-BC**

2 x Cat. 6 Data Outlet

Key Card Switch

Brushed & Polished Chrome

****** To order a white insert please add 'W' at the end of the product code. If you would like a black insert use the code as it is shown.

Mounting Boxes
47mm deep



Polished

D-SP32KEY-PC**

Brushed

D-SP32KEY-BC**

Description

32A Key Card Switch

Co-Axial & Satellite Sockets

Brushed or Polished Chrome

****** To order a white insert please add 'W' at the end of the product code. If you would like a black insert use the code as it is shown.

Standard of Compliance

TV Outlets comply with BS 3041

Satellite Outlets comply with BS EN 50083-2

Mounting Boxes

25mm deep



Polished

D-TV1-PC**

Brushed

D-TV1-BC**

Description

1 x TV/FM Isolated Outlet

D-TV2-PC**

D-TV2-BC**

2 x TV/FM Isolated Outlet

D-SAT1-PC**

D-SAT1-BC**

1 x Satellite Outlet

D-TV+SAT-PC**

D-TV+SAT-BC**

1 x TV/FM & 1 x Satellite Outlet



D-TV1NI-PC**

D-TV1NI-BC**

1 x TV/FM Outlet



D-TV2NI-PC**

D-TV2NI-BC**

2 x TV/FM Outlet



The Ultimate in Choice

Create limitless combinations of tailor made solutions to cater for specific installations

Expand the comprehensive Premium Edge range even further by creating bespoke combinations of grid modules built on a single front plate of either polished or brushed chrome.



20A AX Modules

From Rockers to Secret Key Switches



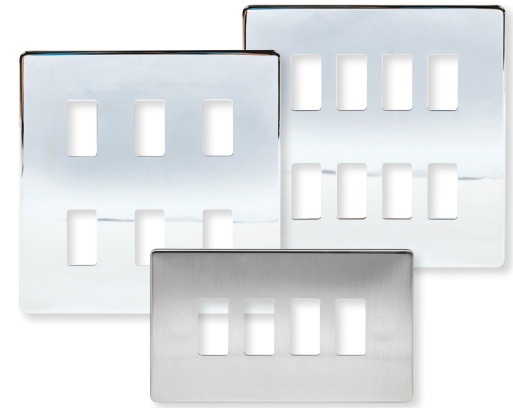
Fused, Flex Outlet & Blank Modules

Fully Interchangeable Design



Dimmers & Indicator Modules

Adding Even Greater Flexibility



Front Plates

Available in 1 to 8 Gang Options

The niGLON Range

of Wiring Accessories

With over 800 products across 9 different ranges
Niglon provides a comprehensive offering for all budgets and applications.



ULTIMA

A screwless decorative faceplate accessory range that come with metal to metal switch rockers & LED indicators where applicable, available in brushed & polished chrome.



**PREMIUM
EDGE S**

A contemporary low-profile design, manufactured with stainless steel faceplates, in a luxurious brushed chrome effect finish and grey inserts where applicable.



PROFILE

A modern range of ultra-slim, smooth edged, moulded wiring accessories, manufactured in a bright white Urea.



**ARCTIC
EDGE**

A white, square-edged, moulded accessory manufactured in a robust urea construction. Arctic Edge offers traditional design values for new, or existing installations.



MATRIX20

A well-executed design offering the flexibility of a dedicated control range for a variety of high-end and performance-demanding applications.



EURO MEDIA

Data and media 25mm x 50mm and 50mm x 50mm standard euro modules manufactured in white and black. These units offer great flexibility in the construction of wiring accessory plates.



METALLIC

A comprehensive range of metal clad wiring accessories for use in the most demanding environments. Manufactured from heavy duty steel and finished in satin silver.



Hurricane 9

Constructed from a High Impact Resistant material. Hurricane products are designed to withstand ingress from dust and water, in both indoor and outdoor applications.

PREMIUM
EDGE

Wiring Accessories Range



niglon

Unit 1 Highlands Park,
Stirling Road,
Cranmore Industrial Estate,
Shirley, Solihull,
West Midlands
B90 4NE

☎ 0121 711 1990 | ☎ 0121 711 1344 | sales@niglon.co.uk | www.niglon.co.uk

E&OE: Images and features shown may differ from the final product.