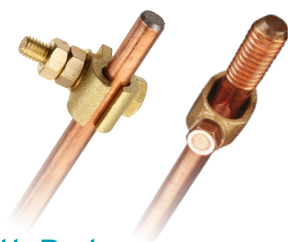


Earth Rods & Accessories



Standard of Compliance
BS EN50164-2



EEB

Earth Rods

List No.	Description	Pack Qty
EEB	Earth connector box	1
EPT	Lightweight earth pit	1
CBER4	3/8" dia. x 4ft copperbond earth rod for use with BCBR 25 microns	10
CBER4-A	3/8" dia. x 4ft copperbond earth rod for use with BCBR 250microns	10
SER35	1/2" dia. x 3 ft 6" Galvanised solid earth rod + clamp	10
XCBER458	5/8" x 4ft extendible copperbond earth rod 25 microns	1
XCBER458-A	5/8" x 4ft extendible copperbond earth rod 250 microns	1
XCBER434	3/4" x 4ft extendible copperbond earth rod	1
EC58	5/8" external coupler for use with XCBER458 & XCBER458A	1
EC58-A	5/8" external coupler centre hexagonal (Heavy Gauge)	1
EC34	3/4" external coupler for use with XCBER434	1
DS58	5/8" driving stud for use with XCBER458	1
DS34	3/4" driving stud for use with XCBER434	1
BCBR	Standard 'B' type, rod to 6mm cable lug clamp for CBER4 and CER4-A	10
SDCC58	Standard 'G' type, cable clamp for 5/8" rod. Conductor range 16-70mm ²	1
BXCB	B' Type split clamp for 5/8 Earth Rod with brass bolt, nut and washer	1
SDCC34	Standard 'G' type, cable clamp for 3/4" rod. Conductor range 16-95mm ²	1

Brass Earthing Terminals



Single Pole

List No.	Max Conductor	Size	Pack Qty
ET4	16mm ²	4 way	10
ET6	16mm ²	6 way	10
ET8	16mm ²	8 way	10
ET9	16mm ²	9 way	10



Double Pole

List No.	Max Conductor	Size	Pack Qty
ETT4	With cheese head, brass screws, 1 x 25 + 3 x 16mm ²	4 way	25
ETT8	With cheese head, brass screws, 2 x 25 + 6 x 16mm ²	8 way	10



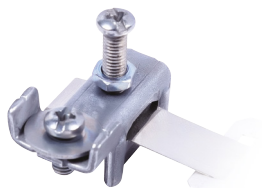
M4 Brass Earth Stud

List No.	Max Conductor	Pack Qty
BET2	10mm ² - Round term, Mail con/box	100

See page **90** for our range of **Brass Earthing Nuts**



Earth Bonding Clamps

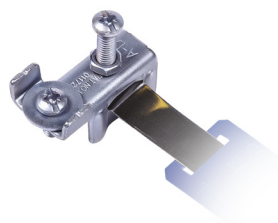


Standard of Compliance
BS 951

Maximum Conductor
A-D 1 x 10mm²

Dry Condition Clamps

List No.	Pipe Diameter	Pack Qty
AEC4-14	12-32mm	25
AEC4/2	32-50mm	20
AEC4/3	50-75mm	20



Standard of Compliance
BS 951

Maximum Conductor
A-D 1 x 10mm²

Damp Condition Clamps - Blue Coded Label

List No.	Pipe Diameter	Pack Qty
AEC2-15	12-32mm	25
AEC2/2	32-50mm	20
AEC2/3	50-75mm	20



Standard of Compliance
BS 951

Maximum Conductor
A-E 2 x 16mm²

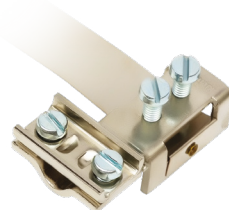
Damp Condition Clamps - Blue Coded Label

List No.	Pipe Diameter	Pack Qty
AEC3-16	12-32mm	20
AEC3/2	32-50mm	20
AEC3/3	50-75mm	20



Safety Label

List No.	Description	Pack Qty
LA1	Aluminium safety earth label for earth clamps (AEC4, AEC2 & AEC3)	200



Standard of Compliance
BS 951

Maximum Conductor
F-H 1 x 75mm²

Specification
• European made

Heavy Duty Clamps - Dry Conditions

List No.	Pipe Diameter	Pack Qty
AEC5	12-38mm	5
AEC5/4	38-100mm	5
AEC5/6	100-150mm	5



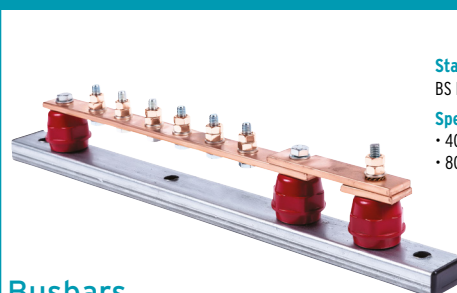
This product is suitable for;

- Wet radiators
- Sink units
- Metal cladding
- Ducting
- Metal work surfaces
- Raised metal flooring
- Computer & telecom ancillaries

Dry Condition Speedy Earth® Clamps

List No.	Description	Pack Qty
SE10	Speedy earth pack	10
SE100	Speedy earth pack	100
LA2	Safety labels (for speedy earth)	200

Earth Disconnection



Standard of Compliance
BS EN13601

Specifications
• 400A (25mm x 6mm)
• 800A (50mm x 6mm)

Busbars

List No.	Description	Pack Qty
EDB6	6 way 400A	1
EDB6D	6 way + link 400A	1
EDB10	10 way 400A	1
EDB10D	10 way + link 400A	1
EDB6-8	6 way 800A	1
EDB6D-8	6 way + link 800A	1
EDB10-8	10 way 800A	1
EDB10D-8	10 way + link 800A	1