

Manual Motor Starters



Data Sheet

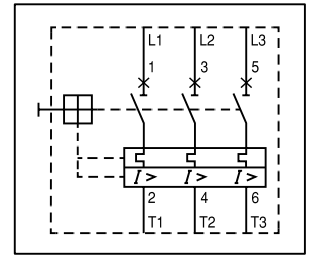
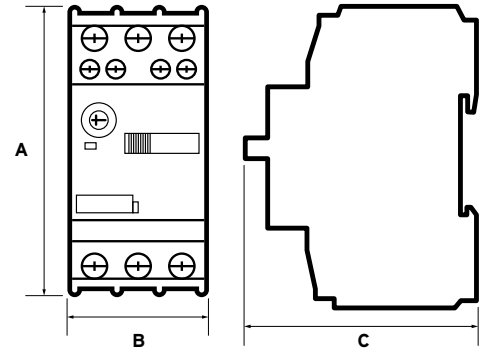
 Download



Protective cover to prevent changes being made once set.



Padlockable switch to lock in the 'off' position, for added safety.

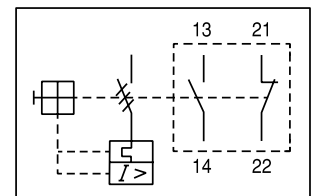
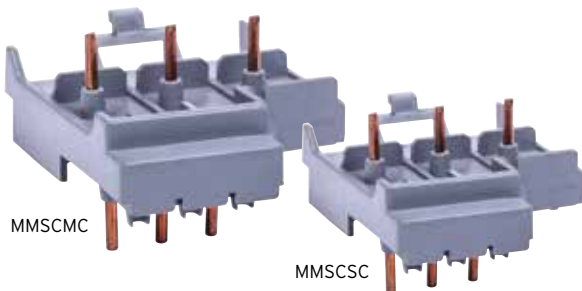


Part No.	Range (A)	Dimensions			Qty
		A (mm)	B (mm)	C (mm)	
MMS0.16	0.1 - 0.16	94	45	75	1
MMS0.25	0.16 - 0.25	94	45	75	1
MMS0.40	0.25 - 0.4	94	45	75	1
MMS0.63	0.4 - 0.63	94	45	75	1
MMS1.0	0.63 - 1.0	94	45	75	1
MMS1.6	1.0 - 1.6	94	45	75	1
MMS2.5	1.6 - 2.5	94	45	75	1
MMS4.0	2.5 - 4	94	45	75	1
MMS6.0	4 - 6	94	45	75	1
MMS10	6 - 10	94	45	75	1
MMS13	9 - 13	94	45	75	1
MMS17	11 - 17	94	45	75	1
MMS22	14 - 22	94	45	75	1
MMS26	18 - 26	94	45	75	1
MMS32	22 - 32	94	45	75	1

Specifications //

- Standard of Compliance - EN 60947-4
- Protection - Sealable flaps
- Switch Handle - Padlockable
- Certification -   

Manual Motor Starter Accessories



Wiring Diagram for AUX1/IMMS

Part No.	Description	Qty
MMSCMC	Coupler MMS to mini contactor	1
MMSCSC	Coupler MMS to standard contactor	1
AUX1/IMMS	Front mounting auxiliary contact 1NO/1NC	1
AUX2/MMS	Side mounting auxiliary contact 1NO/1NC	1

Data Sheet

 Download

Specifications //

- Standard of Compliance - EN 60947-4
- Certification - 