

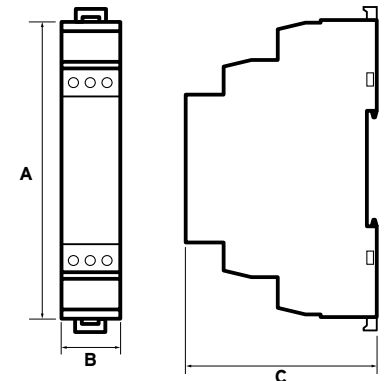
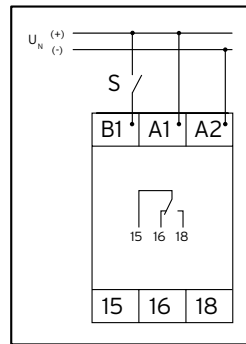
# Multifunction, Multivoltage Timer // Economy



Scan the code for more detailed instructions on how to program the timer.



Close up of the program dial.



Part No.	Voltage Range (AC/DC)	Dimensions			Qty
		A (mm)	B (mm)	C (mm)	
MFT	24-240V	90	17.5	64	1

**Specifications //**

- Standard of Compliance - EN 60947-5
- Contacts - 16A AC1
- Functions - 6
- Zoom Voltage - 24-240V AC/DC
- Power and run - LED Indicators

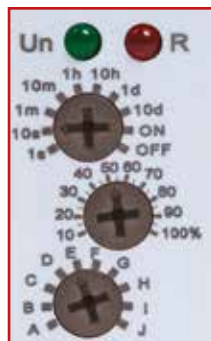
**Functions //**

- E - ON Delay
- R - OFF Delay
- Ws - Single Shot Leading Edge with Control Input
- Wa - Single Shot Trailing Edge with Control Input
- Bp - Flasher Pause First
- F - T-Flip Flop (Toggle)

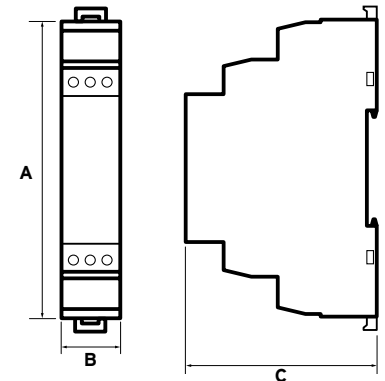
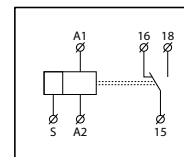
# Multifunction, Multivoltage Timer // Premium



Scan the code for more detailed instructions on how to program the timer.



Close up of the program dial.



Part No.	Voltage Range (AC/DC)	Dimensions			Qty
		A (mm)	B (mm)	C (mm)	
MFTP	12-240V	90	17.5	64	1

**Specifications //**

- Standard of Compliance - EN 61812-1, EN 60947-5-1
- Contacts - 16A AC1
- Functions - 10
- Zoom Voltage - 12-240V AC/DC
- Power and run - LED Indicators
- Certifications - TÜV

**Functions //**

- A - ON Delay (Power On)
- B - Interval (Power On)
- C - Repeat Cycle (Starting Off)
- D - Repeat Cycle (Starting On)
- E - Off Delay (S Break)
- F - Single Shot Leading Edge
- G - Single Shot Trailing Edge
- H - On/Off Delay
- I - Latching Relay
- J - Pulse Generator

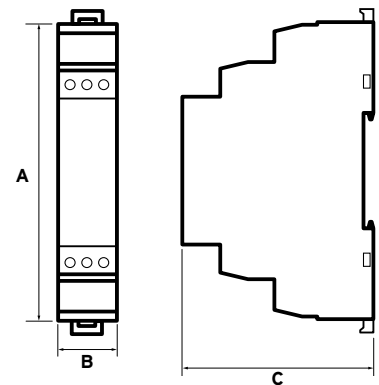
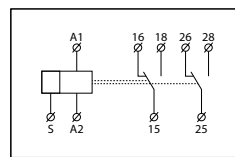
## Delay ON Single Function Timer



Data Sheet  
  
 Download



Close up of the program dial.



**Specifications //**

- Standard of Compliance - EN 61812-1, EN 60947-5-1
- Contacts - 16A AC1
- Function - Delay ON
- Zoom Voltage - 12-240V AC/DC
- Power and run - LED Indicators
- Certifications - TÜV

Part No.	Voltage Range (AC/DC)	Dimensions			Qty
		A (mm)	B (mm)	C (mm)	
DOST	12-240V	90	17.5	64	1

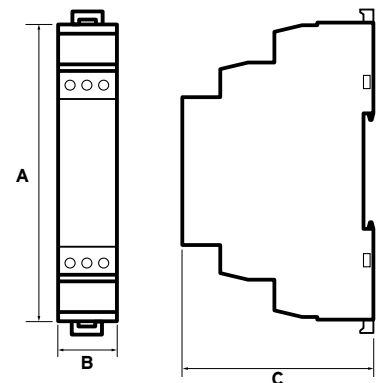
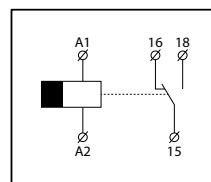
## True Delay OFF Timer



Data Sheet  
  
 Download



Close up of the program dial.



**Specifications //**

- Standard of Compliance - EN 60947-5
- Contacts - 16A AC1
- Function - Time Delay OFF
- Zoom Voltage - 12-240V AC/DC
- Power and run - LED Indicators
- Certifications - TÜV

Note - Power must be applied to the timer for a minimum of 3 seconds to ensure correct operation.

Part No.	Voltage Range (AC/DC)	Dimensions			Qty
		A (mm)	B (mm)	C (mm)	
TDOT	12-240V	90	17.5	64	1

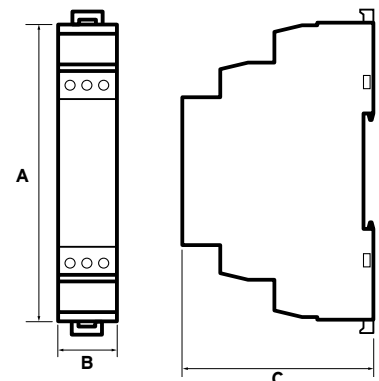
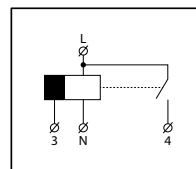
## Staircase Switch Timer



Data Sheet  
  
 Download



Close up of the program dial.



**Specifications //**

- Standard of Compliance - EN 60947-5
- Contacts - 16A AC1
- Functions - AUTO - ON - OFF
- Zoom Voltage - 230V AC
- Power and run - LED Indicators
- Certifications - TÜV

Part No.	Voltage Range (AC)	Dimensions			Qty
		A (mm)	B (mm)	C (mm)	
SCT	230V	90	17.5	64	1

# Voltage Monitors

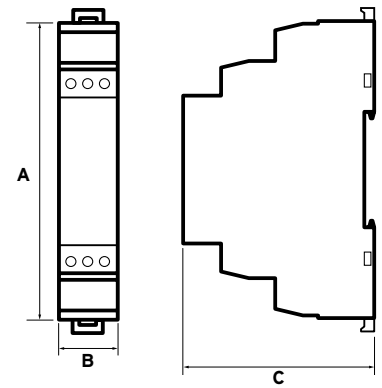


VMT1

VMT2

VMT3

VMT4



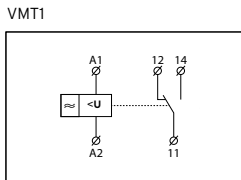
Close up of VMT1 program dial.



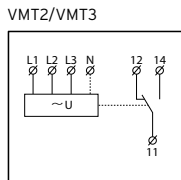
Close up of VMT3 program dial.



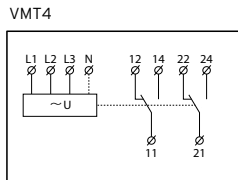
Close up of VMT4 program dial.



VMT1



VMT2/VMT3



VMT4

Part No.	Voltage Range (AC/DC)	Dimensions			Qty
		A (mm)	B (mm)	C (mm)	
VMT1	110 - 240V	90	17.5	64	1
VMT2	110 - 240V	90	17.5	64	1
VMT3	220 - 460V	90	17.5	64	1
VMT4	127 - 230V	90	17.5	64	1

### Specifications // VMT1

- Standard of Compliance - EN60255-1, EN60947-5-1
- Monitored voltage - Own supply (true RMS), Over voltage, Under voltage
- Power and run - LED Indicators
- Certifications - TÜV

### Specifications // VMT2

- Standard of Compliance - EN60255-1, EN60947-5-1
- Monitored voltage - Own supply (true RMS)
- Power and run - LED Indicators
- Certifications - TÜV

### Specifications // VMT3

- Standard of Compliance - EN60255-1, EN60947-5-1
- Monitored voltage - Own supply (true RMS), Over voltage, Under voltage, Phase symmetry, Phase failure
- Power and run - LED Indicators
- Certifications - TÜV

### Specifications // VMT4

- Standard of Compliance - BS EN 60255-1, BS EN 60947-5-1
- Monitored Voltage - Own supply (true RMS), Overvoltage, Under voltage
- Output - 2 x SPDT
- Power and run - LED indicators
- Certifications - TÜV

# Automatic Transfer Switches

Automatic Transfer Switches are the ideal solution for transferring power from the Mains to a Standby or between a Mains to Mains supply.

The range includes 4 Pole and 2 Pole units (2 Pole up to 125A), available in mild steel or polycarbonate enclosures. Four door mounted status indication lights and a Mains Failure Override, key switch as standard.

See pages 55-56 for details

