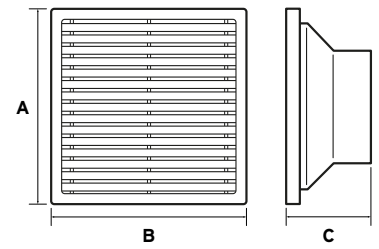


Fans // with Filters



Showing the back of the fan unit.

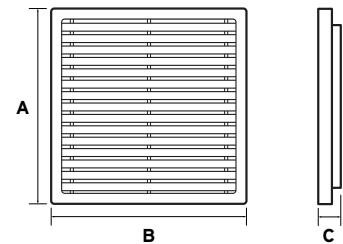


Part No.	Voltage (V AC)	Wattage (W)	Dimensions			Qty
			A (mm)	B (mm)	C (mm)	
CF55145	230	0.12	145	145	71	1
CF55250	230	0.25	250	250	71	1
CF55320	230	0.29	320	320	71	1

Specifications //

- IP Rating - Up to IP55
- Casing - Self extinguishing UL94-V-0 plastic
- RAL - 7035
- Certification -

Exit Filters



Part No.	Dimensions			Qty
	A (mm)	B (mm)	C (mm)	
CFX145	145	145	28	1
CFX250	250	250	28	1
CFX320	320	320	28	1

Specifications //

- IP Rating - Up to IP55
- Casing - Self extinguishing UL94-V-0 plastic
- RAL - 7035
- Certification -

DIN Rail Terminal Packs

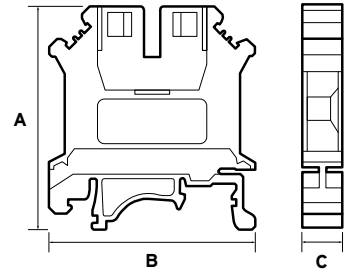
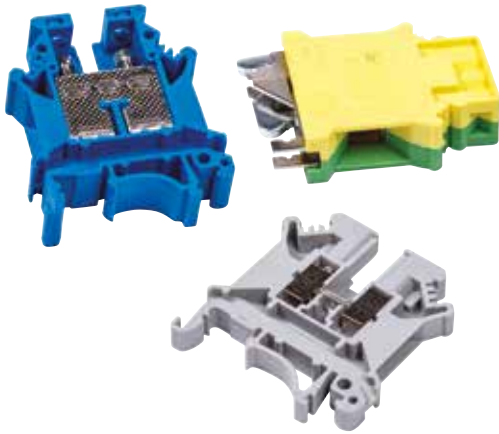


Part No.	Contains	Qty
DIN-PK04	10x 4mm grey, 2x 4mm blue, 1x 4mm earth, 2x end plate, 2x end stop, 1x blank marker strip	1
DIN-PK04A	10x 4mm grey, 1x end plate, 2x end stop, 1x blank marker strip	1
DIN-PK06	3x 6mm grey, 1x 6mm blue, 1x 6mm earth, 1x end plate, 2x end stop, 1x blank marker strip	1
DIN-PK16	3x 16mm grey, 1x 16mm blue, 1x 16mm earth, 1x end plate, 2x end stop, 1x blank marker strip	1

Specifications //

- Standard of Compliance - BS EN 60947-7-1
- Casing - Nylon 66
- Certification -

DIN Rail // Screw Terminals



Grey

Part No.	Amperage (A)	Marker	Compatible End Plate	Dimensions			Pack Qty
				A (mm)	B (mm)	C (mm)	
DIN02GY	32	ZB5	DIN10EPGY	47	42.5	5.2	60
DIN04GY	41	ZB6	DIN10EPGY	47	42.5	6.2	50
DIN06GY	57	ZB8	DIN10EPGY	47	42.5	10.2	40
DIN10GY	76	ZB10	DIN10EPGY	47	42.5	12.2	30
DIN16GY	101	ZB10	DIN16EPGY	54	50	15.2	36
DIN35GY	150	ZB10	Not required	62	71.3	20.2	20
DIN50GY	150	ZB10	Not required	77	83.6	26	10

Specifications //

- Standard of Compliance - BS EN 60947-7-1
- Casing - Nylon 66
- Certification - 

Grey Double

Part No.	Amperage (A)	Marker	Compatible End Plate	Dimensions			Pack Qty
				A (mm)	B (mm)	C (mm)	
DIN04DGY	32	ZB6	DIN04DEPGY	47	42.5	8.2	33

Blue

Part No.	Amperage (A)	Marker	Compatible End Plate	Dimensions			Pack Qty
				A (mm)	B (mm)	C (mm)	
DIN02BU	32	ZB5	DIN10EPBU	47	42.5	5.2	60
DIN04BU	41	ZB6	DIN10EPBU	47	42.5	6.2	50
DIN06BU	57	ZB8	DIN10EPBU	47	42.5	8.2	40
DIN10BU	76	ZB10	DIN10EPBU	47	42.5	10.2	30
DIN16BU	101	ZB10	DIN16EPBU	54	42.5	12.2	36
DIN35BU	150	ZB10	Not required	62	50	15.2	20
DIN50BU	150	ZB10	Not required	77	71.3	20.2	10

Earth

Part No.	Amperage (A)	Marker	Dimensions			Pack Qty
			A (mm)	B (mm)	C (mm)	
DIN04PE	41	ZB6	47	42.5	6.2	50
DIN06PE	57	ZB8	47	42.5	8.2	40
DIN10PE	76	ZB10	47	42.5	10.2	30
DIN16PE	101	ZB10	54	42.5	12.2	36
DIN35PE	150	ZB10	62	50	15.2	20
DIN50PE	150	ZB10	77	71.3	20.2	10

DIN Rail // End Plates for Screw Terminals



Part No.	Description	Colour	Size	Pack Qty
DIN10EPGY	End Plate	Grey	2.5 - 10mm	100
DIN10EPBU	End Plate	Blue	2.5 - 10mm	100
DIN16EPGY	End Plate	Grey	16mm	100
DIN16EPBU	End Plate	Blue	16mm	100
DIN04DEP	End Plate Double Terminal	Grey	4mm	100
DINPP	Partition Plate	Grey	N/A	50
DINSTOP	End stop	Grey	N/A	50

Specifications //

- Standard of Compliance - BS EN 60947-7-1
- Casing - Nylon 66
- Certification - TÜV

DIN Rail // Combs for Screw Terminals

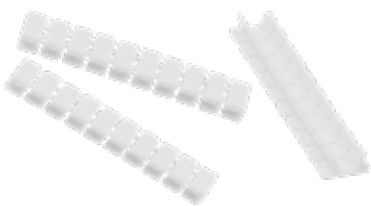


Part No.	Description	Pack Qty
DIN0210	Comb 10 way for 2.5mm Screw Terminal	10
DIN0410	Comb 10 way for 4mm Screw Terminal	10
DIN0610	Comb 10 way for 6mm Screw Terminal	10
DIN1010	Comb 10 way for 10mm Screw Terminal	10

Specifications //

- Standard of Compliance - IEC EN 60947-7-1
- Colour - Grey
- Comb material - Zn plated brass

DIN Rail // Markers for Screw & Screwless Terminals

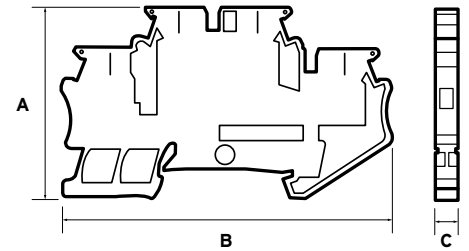
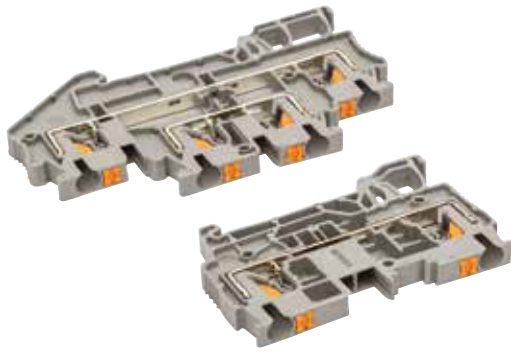


Part No.	Size	Pack Qty
DIN02M	2.5mm	10 x 10 (100)
DIN04M	4mm	10 x 10 (100)
DIN06M	6mm	10 x 10 (100)
DIN10M	10 - 240mm	10 x 10 (100)

Specifications //

- Standard of Compliance - IEC EN 60947-7-1
- Colour - White
- Material - ABS plastic

DIN Rail // Screwless Terminals

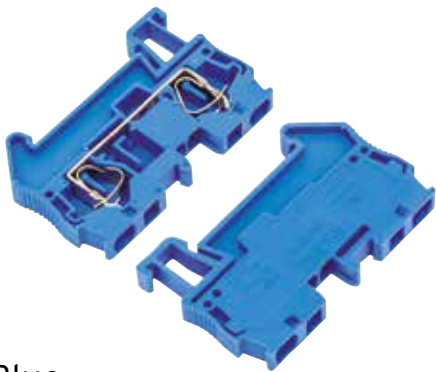


Grey

Part No.	Amperage (A)	Marker	Compatible End Plate	Dimensions			Pack Qty
				A (mm)	B (mm)	C (mm)	
DIN02PGY	32	ZB5	DIN02PEP	36.5	48.5	5.2	50
DIN04PGY	41	ZB6	DIN04PEP	36.5	56	6.2	40
DIN06PGY	57	ZB8	DIN06PEP	43.5	65.5	8.2	24
DIN10PGY	65	ZB10	DIN10PEP	50.3	71.4	10.2	25
DIN16PGY	85	ZB10	DIN16PEP	51.1	80.4	12.2	18
DIN35PGY	115	ZB10	DIN35PEP	59.1	99.8	16.2	10

Specifications //

- Standard of Compliance - BS EN 60947-7-1
- Casing - Nylon 66
- Certification - 



Blue

Part No.	Amperage (A)	Marker	Compatible End Plate	Dimensions			Pack Qty
				A (mm)	B (mm)	C (mm)	
DIN02PBU	32	ZB5	DIN02PEP-B	36.5	48.5	5.2	50
DIN04PBU	41	ZB6	DIN04PEP-B	36.5	56	6.2	40
DIN06PBU	57	ZB8	DIN06PEP-B	43.5	65.5	8.2	24
DIN10PBU	65	ZB10	DIN10PEP-B	50.3	71.4	10.2	25
DIN16PBU	85	ZB10	DIN16PEP-B	51.1	80.4	12.2	18
DIN35PBU	115	ZB10	DIN35PEP-B	59.1	99.8	16.2	10



ENCLOSURES

Available in:

- Stainless Steel, Mild Steel & GRP
- Variety of sizes
- Bespoke options

See Pages
6-12

DIN Rail // End Plates for Screwless Terminals

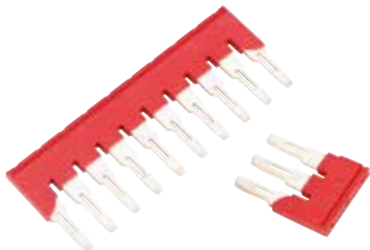


Part No.	Colour	Size	Pack Qty
DINO2PEP	Grey	2.5mm	100
DINO4PEP	Grey	4mm	100
DINO6PEP	Grey	6mm	50
DINO10PEP	Grey	10mm	50
DINO16PEP	Grey	16mm	50
DIN35PEP	Grey	35mm	50
DINO2PEP-B	Blue	2.5mm	100
DINO4PEP-B	Blue	4mm	100
DINO6PEP-B	Blue	6mm	50
DINO10PEP-B	Blue	10mm	50
DINO16PEP-B	Blue	16mm	50
DIN35PEP-B	Blue	35mm	50

Specifications //

- Standard of Compliance - BS EN 60947-7-1
- Casing - Nylon 66
- Certification - TÜV

DIN Rail // Combs for Screwless Terminals



Part No.	Description	Pack Qty
DINO2P3W	Comb 3 way for 2.5mm screwless terminal	100
DINO2P10W	Comb 10 way for 2.5mm screwless terminal	10
DINO4P3W	Comb 3 way for 4mm screwless terminal	100
DINO4P10W	Comb 10 way for 4mm screwless terminal	10
DINO6P3W	Comb 3 way for 6mm screwless terminal	100
DINO6P10W	Comb 10 way for 6mm screwless terminal	10
DINO10P10W	Comb 10 way for 10mm screwless terminal	100
DINO16P10W	Comb 10 way for 16mm screwless terminal	10

Specifications //

- Standard of Compliance - IEC EN 60947-7-1
- Colour - Red
- Comb material - Zn plated brass
- Insertion - Top