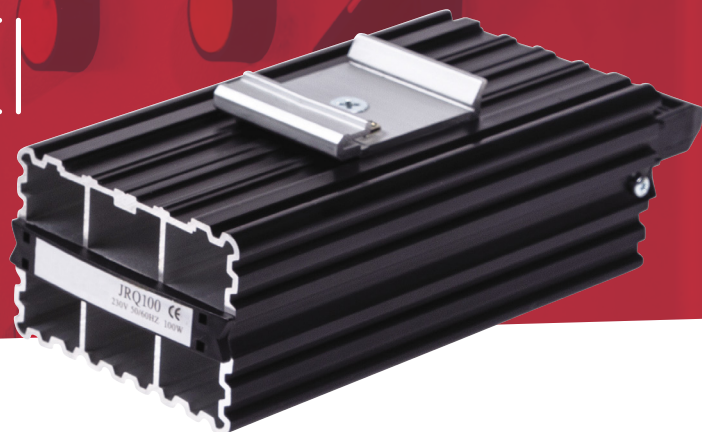


PANEL COMPONENTS

PANEL HEATERS PASSIVE HEATERS CH100W



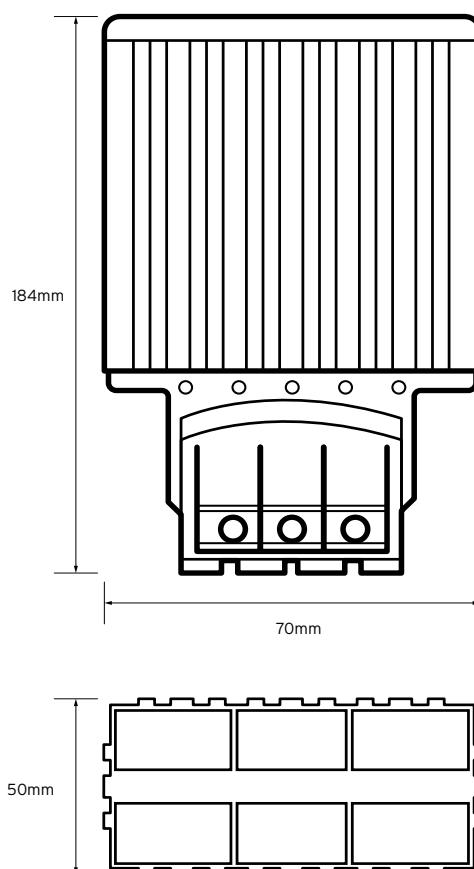
Passive heater for the control of moisture in a control panel. The aluminium profile provides a stable release of heat. Quick connect terminals aid installation.

Din rail mounting

Technical Drawing

General Characteristics

Heat output at 20°C	100W
Contact	NO
Rated voltage	230V AC 50/60 Hz
Maximum current	4.5A
Width	70mm
Height	184mm
Depth	50mm
Construction material	Aluminium
Heating element	PTC, self-adjusting
Connection type	Quick Connect
Terminal Capacity	2.5mm ²
Operating/Storage temperature	-45° to +70° C
Ingress protection	IP20
Weight	360g



Additional Information

This product is for use by skilled persons or instructed persons. The installation of this product must comply with current IEE regulations. Terminals, including those factory fitted, must be checked for correct tightness before commissioning. All terminals should be periodically checked for correct tightness. The data herein serves only to describe the product and should not be regarded as representing guaranteed properties in the legal sense. We reserve the rights of modification, whilst every care has been taken in ensuring the accuracy of this catalogue, the Supplier accepts no liability whatsoever for any eventuality arising from errors or omissions within its catalogues, brochures or within any online presence.