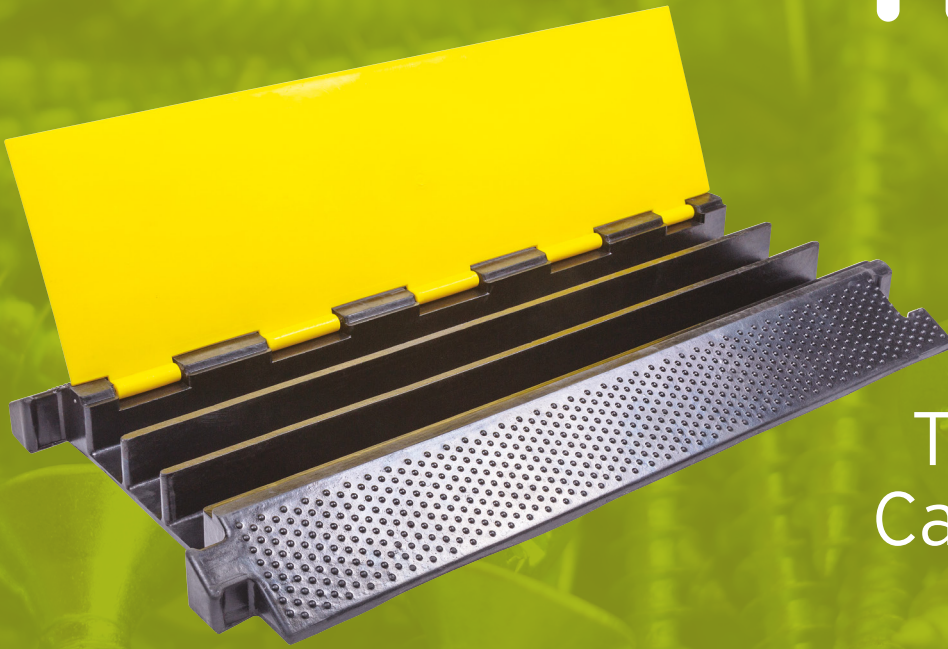


niglon

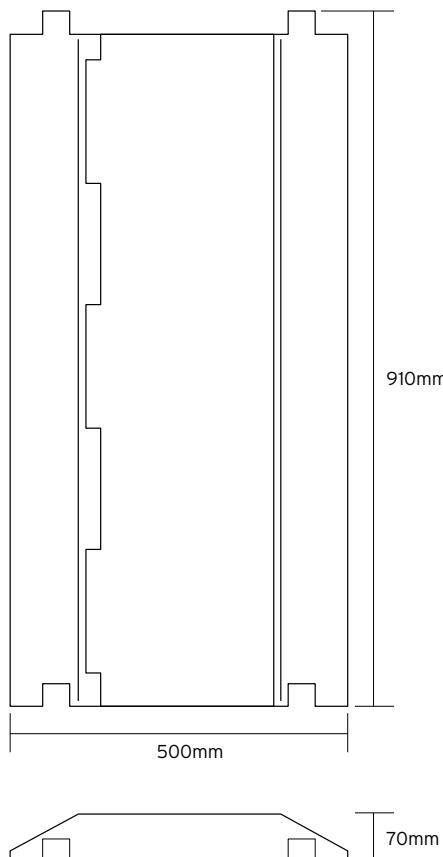
Fixings & Tools



HDCP

Heavy Duty Three Channel Cable Protector

Technical Drawing



Technical Specifications

Use	For outdoor events and building sites
Weight	14.2kg
Colour	Black/Yellow
No. of Cable Channels	3 cable channels (each 60 x 40mm)
Rated Load	7500kg (TÜV certified)
Standards of Compliance	CE
Dimensions	910 x 500 x 70mm (L x W x H)

Features

Anti-slip chequer-plate patterning
Hinged lid allowing cable insertion when ramps are in position
Interlinkable design
Suitable for traffic flow at low speeds
Robust design suitable for HGVs