

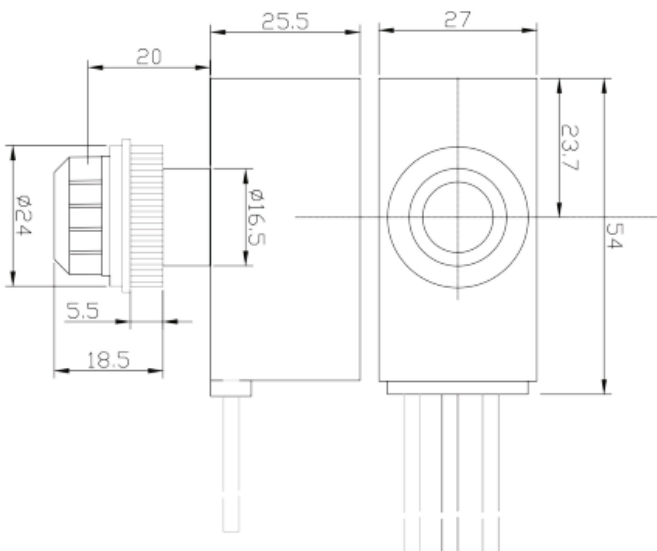
niglon

General Lighting

TS10 Photocell Kit



Technical Drawing



DIMENSIONS IN mm

Technical Specifications

Class	Class II (Must not be earthed)
Ingress Protection (IP)	IP54(Casing), IP66(Lens)
Nominal Voltage	120/240/277 Vac,50/60Hz
Applicable Voltage	105-305 Vac,50/60Hz
Rated Load	10A (5A)
Sensor	Photodiode
Standard of Compliance	CE, UKCA
Power Consumption	<1W
Operating Temperature	-30C to +70C
Life Span	5000 Operations Minimum
Fail Mode	Fail Off
Housing	UV Stabilized Polycarbonate
Switch on Level	<35 Lux
Switch off Level	>105 Lux
On/Off Delay	10-30 secs
Clearance Hole Required	17mm Dia.
Max. Load	LED: 250W Incandescent: 1200W HPS/MH: 500W