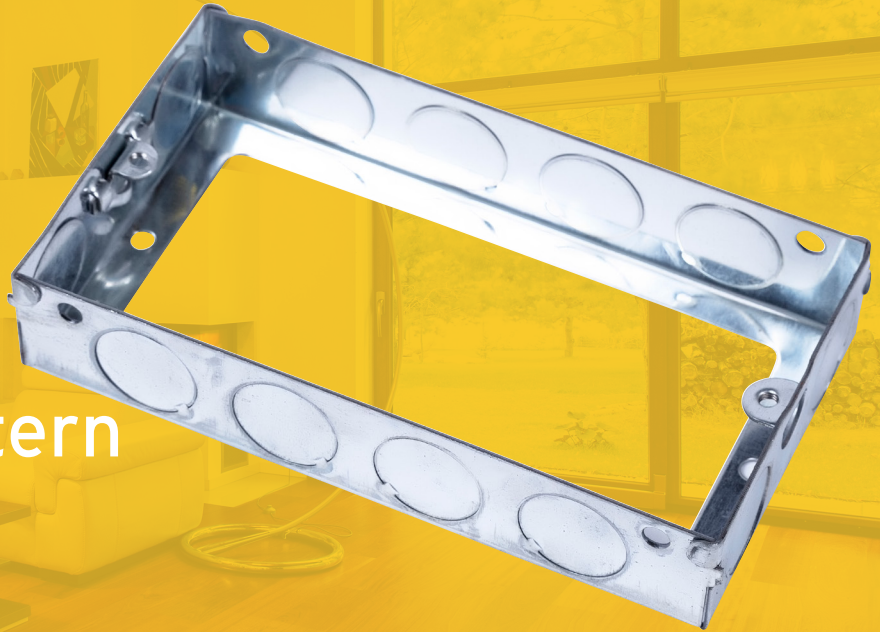


ES2EB

Metal Switch & Socket Box Extension Pattern



Technical Specifications

Type	Knockout Box
Depth	35mm
No. Gangs	2 Gang
Lugs	1 Adjustable & 1 Fixed
Dimensions	L 72mm x W 136mm x D 35mm
Knockouts	9x20mm, 3x25mm Dia.

Technical Drawing

