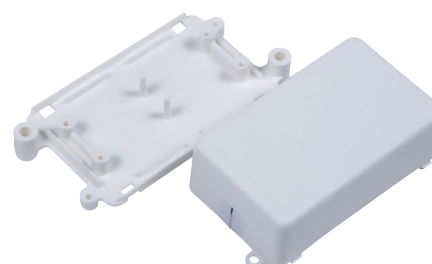




Junction Boxes



Standard of Compliance
BS EN 60670-2



Standard of Compliance
BS EN 7671:2008
BS 5733

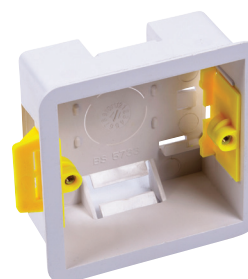
Junction Boxes

List No.	Description	Pack Qty
JB204N58W	20A-4P junction box 58mm dia	20
JB204S80W	20A-4P junction box 80mm dia	10
JB206S86W	20A-6P junction box 86mm dia	10
JB303S90W	30A-3P junction box 90mm dia	10
JB603150W	60A 3P junction box 150mm dia	1
JB204N58B	20A-4P junction box 58mm dia	20
JB204S80B	20A-4P junction box 80mm dia	10
JB206S86B	20A-6P junction box 86mm dia	10
JB303S90B	30A-3P junction box 90mm dia	10
JB603150B	60A 3P junction box 150mm dia	1

In-line Boxes

List No.	Description	Pack Qty
CB15V0	3 terminal 5-15A (chock-block box) Flame retardant. IP40 c/w cord grips. Downlight suitable. 74 x 47 x 27mm, connector not supplied	50

Dry Lining Boxes



Standard of Compliance
BS5733:2010, A1:2014

Specifications

- Boxes fit all popular board thicknesses

Dry Lining Boxes

List No.	Description	Pack Qty
FF1	35mm 1 Gang	10
FF2	35mm 2 Gang	10
DFF2	35mm 'Dual'	10
FF1/45	45mm 1 Gang	10
FF2/45	45mm 2 Gang	10
FF2+1	35mm 2 Gang + 1 Gang	10
FF1R	35mm dia Round	10



Standard of Compliance
BS EN 60670-2

Insulated Link Boxes

List No.	Description	Pack Qty
N342/18	60A Single Pole (4 x 25mm ²)	1
N347/38	100A Single Pole (5 x 35mm ²)	1
N473/03	200A Single Pole (5 x 70mm ²)	1
N344/16	60A Double Pole (3 x 25mm ² & 2 x 16mm ²)	1
N345/19	100A Double Pole (2 x 5 x 35mm ²)	1

See page 71 for
Membrane Moulded Boxes

