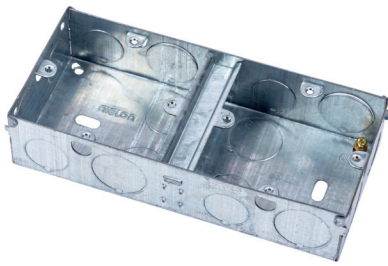


Back Boxes & Accessories



Standard of Compliance
BS EN60670
BS 4662

Metal Switch & Socket Boxes

List No.	Description	Pack Qty
Standard Pattern		
EPD	16mm 1 gang fitted with 1 adj & 1 fixed lug	20
E11	25mm 1 gang fitted with 1 adj & 3 fixed lugs	100
E12	25mm 2 gang fitted with 1 adj & 1 fixed lug	50
ES1	35mm 1 gang fitted with 1 adj & 3 fixed lugs	100
ES2	35mm 2 gang fitted with 1 adj & 1 fixed lug	50
AR1	27mm 1 gang architrave fitted with 2 fixed lugs	20
CB2	47mm 1 gang fitted with 1 adj & 3 fixed lugs	10
SB1	47mm 2 gang fitted with 1 adj & 1 fixed lug	5
Dual Pattern		
DES1	25mm 2 x 1 gang each outlet fitted with 1 adj & 8 fixed lugs	5
DES2	35mm 2 x 1 gang each outlet fitted with 1 adj & 4 fixed lugs	5
DES2/1	35mm 2 + 1 gang each outlet fitted with 1 adj & 4 fixed lugs	5
DES2/3	35mm 3 x 1 gang	5
DES211	35mm 2 x 1 x 1 gang	5
DES22	35mm 2 x 2 gang	5
DES221	35mm 2 x 2 x 1 gang	5
Extension Pattern		
EPDEB	16mm 1 gang fitted with 1 adj & 1 fixed lug	20
E11EB	25mm 1 gang fitted with 1 adj & 3 fixed lugs	10
E12EB	25mm 2 gang fitted with 1 adj & 1 fixed lug	10
ES1EB	35mm 1 gang fitted with 1 adj & 3 fixed lugs	10
ES2EB	35mm 2 gang fitted with 1 adj & 1 fixed lug	10



Usage
Fix a broken screw thread in a metal back box

Back Box Saver

List No.	Pack Qty
BBS1	1
BBS10	10



Note
• Can be used to extend the length of switch & socket screws by 35mm
• Used when a back box is too deep in the wall for standard fixing screws

Brass Extension Stud

List No.	Size	Pack Qty
EXS35	M3.5 x 34mm	100

Insulated Connector Boxes



Standard of Compliance
IEC 60998

Certified



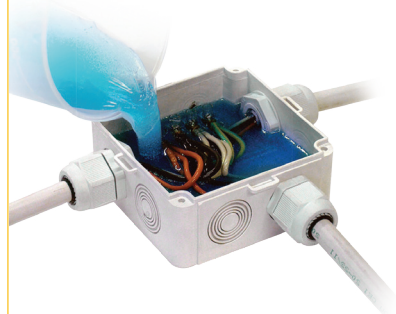
Specifications

- IP55
- Snap-fit cover
- Flame retardant
- Halogen free
- *IP54 - 5 way terminal provided

IP55 Moulded Connector Boxes

List No.	Size	Fairlead Entries	Pack Qty
FD7	77 x 75 x 42mm	7 x 19mm	50
FD10	93 x 43 x 42mm	6 x 19 + 4 x 15mm	50
FD12	93 x 90 x 48mm	12 x 19mm	50
8205*	75 x 75 x 37mm	7 x 19mm	10

Gel



Specifications

- Offers IP68 protection
- Re-enterable & reusable
- No Shelf life limitation
- Removable
- Dielectric strength > 22Kv
- Installations up to 1Kv & 140°C
- Non-toxic

Note

- Connection box, wires & glands not included

IP68 Insulating & Sealing Gel

List No.	Description	Pack Qty
BG170	170ml mix-sachet	1
BG250	250ml mix-sachet	1
BG400	400ml mix-sachet	1