

# niglon™ Control & Automation

## MOTOR CONTROL GEAR

### MODULAR CONTACTORS

#### 1MC2/20230



Installation contactors are din rail mounted and suitable for fitting in consumer units. Manual override allow switching when the control voltage is not applied. Flag indication. Fingerproof terminals

#### General Characteristics

Standards	BSEN 60947-4-1, BSEN 61095 & BSEN 60947-5-1
Thermal Current I <sub>th</sub>	20A
Main Pole Contact Configuration	2 NO
Module Width	1
Rated Operational Voltage (U <sub>e</sub> )	230 V
Rated Operational Current AC1 I <sub>e</sub>	20A
Rated Operational Frequency	50/60 Hz
Rated Operational Current AC-3	9A
Mechanical Endurance	3 000 000 ops
Electrical Endurance	300 000 ops
Width	17.5mm
Height	85mm
Depth	60mm
Indication	Flag and Override
Terminal Bolt	M5
Screw Head	PZ2
Terminal Capacity	1.5 - 16mm <sup>2</sup>
Tightening Torque	3.5 Nm
Weight	0.13 Kg

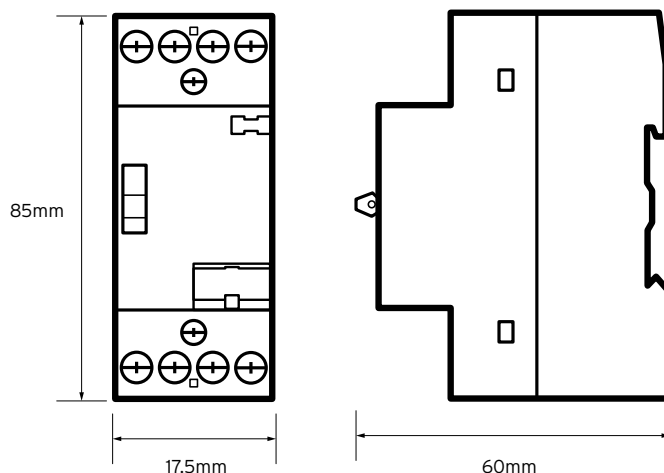
#### Coil Characteristics

Coil Voltage	230VAC
Inrush Current	12 VA
Sealed Current	2.8 VA
Pull-in Voltage	85 - 110 %
Closing time	10 - 15 ms

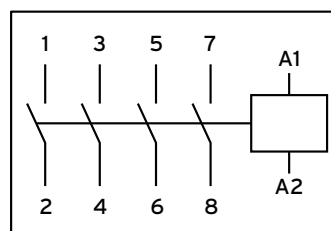
#### Available Accessories

MCA3	Vented spacer one module width
------	--------------------------------

#### Technical Drawing



#### Wiring Diagram



#### Additional Information

This product is for use by skilled persons or instructed persons. The installation of this product must comply with current IEE regulations. Terminals, including those factory fitted, must be checked for correct tightness before commissioning. All terminals should be periodically checked for correct tightness. The data herein serves only to describe the product and should not be regarded as representing guaranteed properties in the legal sense. We reserve the rights of modification, whilst every care has been taken in ensuring the accuracy of this catalogue, the Supplier accepts no liability whatsoever for any eventuality arising from errors or omissions within its catalogues, brochures or within any online presence.