

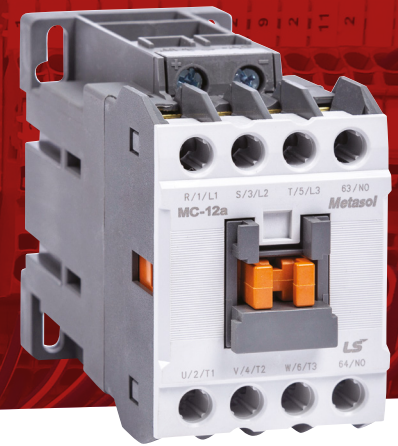
niglon Control & Automation

MOTOR CONTROL GEAR

STANDARD CONTACTOR

22A 3 POLE DC COIL

3SC2224D



3 pole contactors are for the control of electric motors, and have auxiliary contacts fitted. Din rail mounting

General Characteristics

Standards	IEC 60947-4, UL-508
AC-3 Rated Load	22A
AC-3 Rated Power @ 415V	11kW
Rated Operational Voltage (Ue)	≥ 690V
Main Contact Configuration	3 Pole NO
Auxilliary Contacts	1NO + 1NC
Maximum Operation Frequency	1800 per hour
Mechanical Endurance	25 000 000 ops
Electrical Endurance	2 500 000 ops
Width	44mm
Height	80mm
Depth	113mm
Terminal Capacity	2.5 to 10mm ²
Tightening Torque	4 Nm
Weight	0.53Kg
Tightening Torque	4 Nm
Weight	0.53Kg

Coil Characteristics

Available Coil Voltages	24VDC
Inrush Current	9VA
Sealed Current	9 VA
Pull-in Voltage	80 - 110 %
Thermal Dissipation	50W
Closing time	45 - 55 ms

Available Accessories

AUX0/2FM	Auxilliary Contact 2NC
AUX1/1FM	Auxilliary Contact 1NO/1NC
AUX0/4FM	Auxilliary Contact 4NC
AUX1/3FM	Auxilliary Contact 1NO/3NC
AUX2/2FM	Auxilliary Contact 2NO/2NC
AUX3/1FM	Auxilliary Contact 3NO/1NC
AUX4/0FM	Auxilliary Contact 4NO
AUX0/1SM	Auxilliary Contact 1NC side mount

Available Accessories

AUX1/OSM	Auxilliary Contact 1NO side mount
4PMI135	Mechanical Interlock
MMSCSC	Coupler to MMS
Manual Motor Starter MMS0.16	0.1 - 0.16 A
Manual Motor Starter MMS0.25W	0.16 - 0.25 A
Manual Motor Starter MMS0.4	0.25 - 0.4 A
Manual Motor Starter MMS0.6	0.4 - 0.63 A
Manual Motor Starter MMS1.0	0.63 - 1.0 A
Manual Motor Starter MMS1.6	1.0 - 1.6 A
Manual Motor Starter MMS2.5	1.6 - 2.5 A
Manual Motor Starter MMS4.0	2.5 - 4 A
Manual Motor Starter MMS6.0	4 - 6 A
Manual Motor Starter MMS10	6 - 10 A
Manual Motor Starter MMS13	9 - 13 A
Thermal Overload ORSCO.16	0.1 - 0.16 A
Thermal Overload ORSCO.25	0.16 - 0.25 A
Thermal Overload ORSCO.4	0.25 - 0.4 A
Thermal Overload ORSCO.63	0.4 - 0.63 A
Thermal Overload ORSC1.0	0.63 - 1.0 A
Thermal Overload ORSC1.6	1.0 - 1.6 A
Thermal Overload ORSC2.5	1.6 - 2.5 A
Thermal Overload ORSC4	2.5 - 4 A
Thermal Overload ORSC6	4 - 6 A
Thermal Overload ORSC8	5 - 8 A
Thermal Overload ORSC9	6 - 9 A
Thermal Overload ORSC10	7 - 10 A
Thermal Overload ORSC13	9 - 13 A

Additional Information

This product is for use by skilled persons or instructed persons. The installation of this product must comply with current IEE regulations. Terminals, including those factory fitted, must be checked for correct tightness before commissioning. All terminals should be periodically checked for correct tightness. The data herein serves only to describe the product and should not be regarded as representing guaranteed properties in the legal sense. We reserve the rights of modification, whilst every care has been taken in ensuring the accuracy of this catalogue, the Supplier accepts no liability whatsoever for any eventuality arising from errors or omissions within its catalogues, brochures or within any online presence.

niGLON Control & Automation

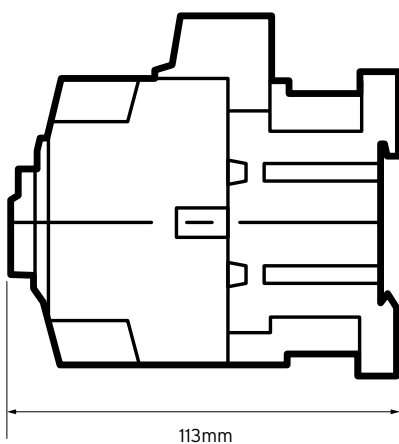
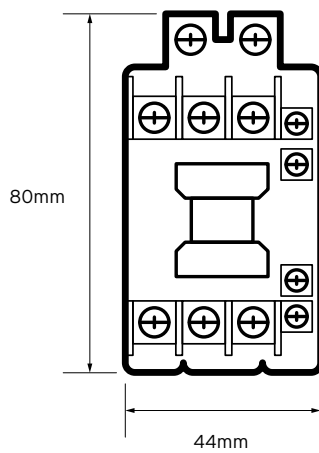
MOTOR CONTROL GEAR

STANDARD CONTACTOR

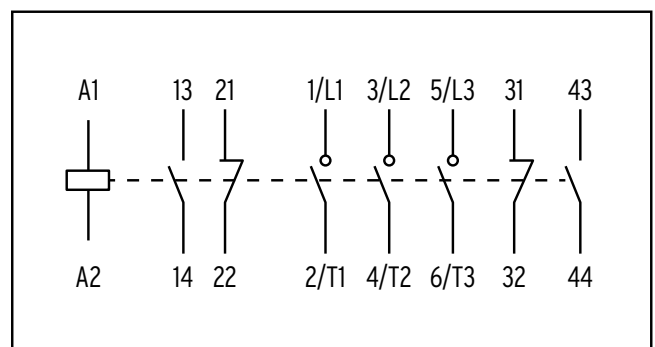
22A 3 POLE DC COIL

3SC2224D

Technical Drawing



Wiring Diagram



*1 - Optional axillary contact unit

Additional Information

This product is for use by skilled persons or instructed persons. The installation of this product must comply with current IEE regulations. Terminals, including those factory fitted, must be checked for correct tightness before commissioning. All terminals should be periodically checked for correct tightness. The data herein serves only to describe the product and should not be regarded as representing guaranteed properties in the legal sense. We reserve the rights of modification, whilst every care has been taken in ensuring the accuracy of this catalogue, the Supplier accepts no liability whatsoever for any eventuality arising from errors or omissions within its catalogues, brochures or within any online presence.