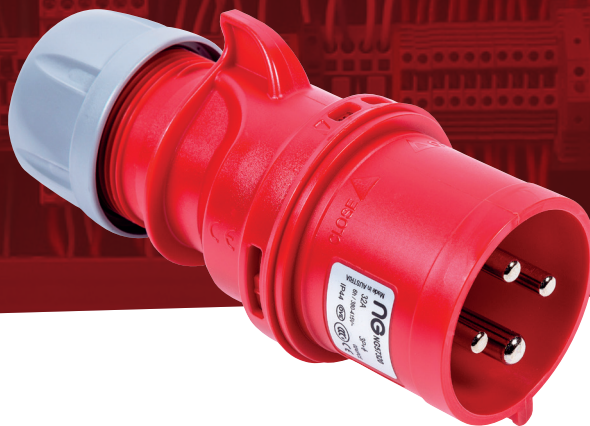


## ENCLOSURES

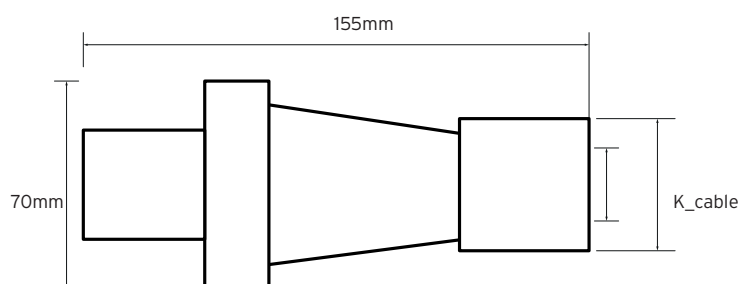
### IN-LINE PLUG 57321



#### General Characteristics

Voltage	415V
Amp.	32A
Poles	4P+E
K_cable Ø	11.5-22mm
Contact Screws	110
Wire Flexible	2.5-6mm <sup>2</sup>
SW	50mm
IP Rating	IP44
Weight	232g
Dimensions	155x70mm

#### Technical Drawing



#### Additional Information

The data herein serves only to describe the product and should not be regarded as representing guaranteed properties in the legal sense. We reserve the rights of modification, whilst every care has been taken in ensuring the accuracy of this catalogue, the Supplier accepts no liability whatsoever for any eventuality arising from errors or omissions within its catalogues, brochures or within any online presence.