

niglon™ Control & Automation

MOTOR CONTROL GEAR

MINI CONTACTORS

3 POLE AC

4MC1224, 4MC12110 4MC12230



Mini contactors are for control of motors, and have 4 main poles with a normally open auxiliary contact.

General Characteristics

Standards	IEC 60947-4, UL-508,
Width	45mm
Height	58mm
Depth	52mm
Rated Operational Voltage (Ue)	≥ 690V
AC-3 Rated Load	12A
AC-3 Rated Power	5.5kW
Number of Main Poles	3
AC1 Auxilliary Contact Rating	16A
Maximum Operation Frequency	1800 per hour
Mechanical Endurance	12 000 000 ops
Electrical Endurance	1 000 000 ops
Terminal Capacity	up to 2.5mm ²
Tightening Torque	1.2 Nm
Indication	Coil Energised
Mounting	Din Rail or Screw
Weight	0.18 Kg

Coil Characteristics

Available Coil Voltages	24VAC, 110VAC, 230VAC
Coil consumption	2W
Inrush Current	32 VA
Sealed Current	6 VA
Pull-in Voltage	80 - 110 %
Drop out Voltage	30 - 40 %
Closing time	10 - 20 ms

Available Accessories

AUX0/2FM-MINI	Auxilliary Contact 2NC
AUX1/1FM-MINI	Auxilliary Contact 1NO/1NC
AUX0/4FM-MINI	Auxilliary Contact 4NC
AUX1/3FM-MINI	Auxilliary Contact 1NO/3NC
AUX2/2FM-MINI	Auxilliary Contact 2NO/2NC
AUX3/1FM-MINI	Auxilliary Contact 3NO/1NC
AUX4/0FM-MINI	Auxilliary Contact 4NO
MCM1	Mechanical Interlock
MMSCMC	Coupler MMS to mini-contactor
MMSCSC	Coupler MMS to standard contactor
ORMC0.16	Thermal Overload 0.1 - 0.16 A
ORMC0.25	Thermal Overload 0.16 - 0.25 A
ORMC0.4	Thermal Overload 0.25 - 0.4 A
ORMC0.63	Thermal Overload 0.4 - 0.63 A
ORMC1.0	Thermal Overload 0.63 - 1.0 A
ORMC1.6	Thermal Overload 1.0 - 1.6 A
ORMC2.5	Thermal Overload 1.6 - 2.5 A
ORMC4	Thermal Overload 2.5 - 4 A
ORMC6	Thermal Overload 4 - 6 A
ORMC8	Thermal Overload 5 - 8 A
ORMC10	Thermal Overload 6 - 10 A
ORMC13	Thermal Overload 9 - 13 A

Additional Information

This product is for use by skilled persons or instructed persons. The installation of this product must comply with current IEE regulations. Terminals, including those factory fitted, must be checked for correct tightness before commissioning. All terminals should be periodically checked for correct tightness. The data herein serves only to describe the product and should not be regarded as representing guaranteed properties in the legal sense. We reserve the rights of modification, whilst every care has been taken in ensuring the accuracy of this catalogue, the Supplier accepts no liability whatsoever for any eventuality arising from errors or omissions within its catalogues, brochures or within any online presence.

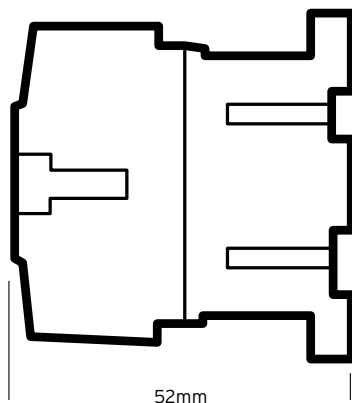
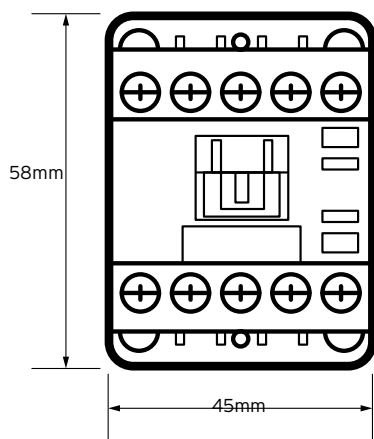
niglon™ Control & Automation

MOTOR CONTROL GEAR

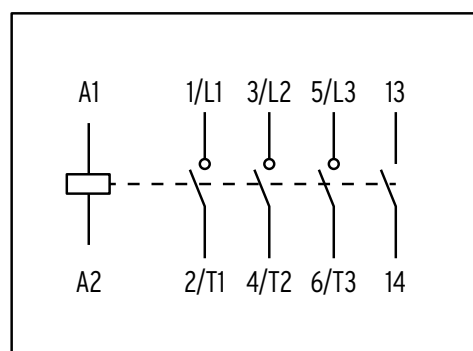
MINI CONTACTORS

3 POLE AC

Technical Drawing



Wiring Diagram



Additional Information

This product is for use by skilled persons or instructed persons. The installation of this product must comply with current IEE regulations. Terminals, including those factory fitted, must be checked for correct tightness before commissioning. All terminals should be periodically checked for correct tightness. The data herein serves only to describe the product and should not be regarded as representing guaranteed properties in the legal sense. We reserve the rights of modification, whilst every care has been taken in ensuring the accuracy of this catalogue, the Supplier accepts no liability whatsoever for any eventuality arising from errors or omissions within its catalogues, brochures or within any online presence.