

# niGLON

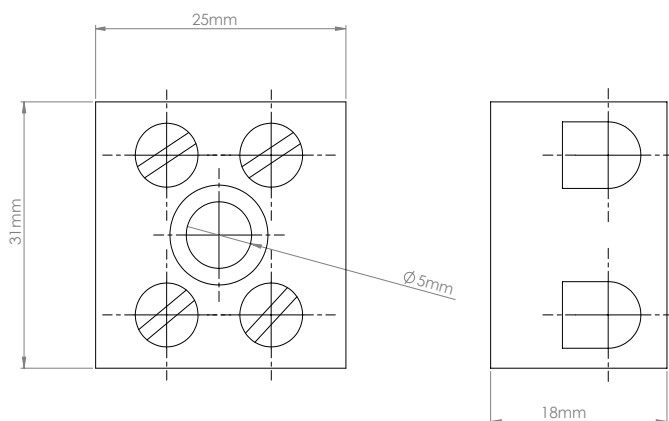
## Installation Essentials

### PC302C

### Porcelain Connector



#### Technical Drawing



#### Technical Specifications

|                                    |                      |
|------------------------------------|----------------------|
| <b>Standard of Compliance</b>      | BS EN60998-1/EN60335 |
| <b>Maximum ambient Temperature</b> | 280°C                |
| <b>Rated Voltage</b>               | 450V                 |
| <b>Poles</b>                       | 2, Centre fixing     |
| <b>Amps</b>                        | 30A                  |
| <b>Dimensions (HxWxL)</b>          | 18x25x31mm           |
| <b>Colour</b>                      | White                |
| <b>Housing</b>                     | Porcelain            |
| <b>Extra</b>                       | Non-inflammable      |