

nigLON

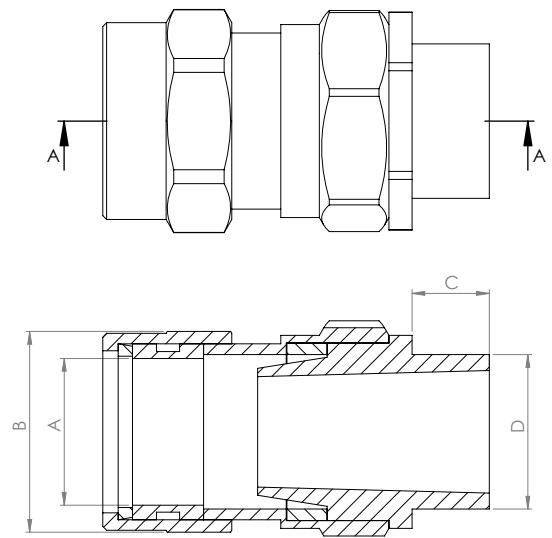
Cable Management

Armoured Cable Gland Packs - LSF CW



Application	Outdoor applications to provide waterproof seal for use with all types of SWA cables
Standard of Compliance	EN 62444 & BS 6121
IP Rating	IP66
20 - 32mm Kit comprises of	2 x CW Gland 2 x Brass Earth Tag 2 x Locknut 2 x LSF Shroud
40 - 75mm kit comprises of	1 of each item

Technical Drawing



Technical Specifications								
List No.	LSF20SCW	LSF20CW	LSF25CW	LSF32CW	*LSF40CW	*LSF50CW	*LSF63CW*	*LSF75CW
Size	20mm Small	20mm	25mm	32mm	40mm	50mm	63mm	63mm
Entry Threads "D" (Metric)	M20	M20	M25	M32	M40	M50	M63	M75
Entry Threads "D" (Thread Length "C")	10.0mm	10.0mm	10.0mm	10.0mm	15.0mm	15.0mm	15.0mm	15.0mm
Overall Cable Diameter "A" (Min)	9.5mm	13.9mm	19.9mm	26.2mm	27.9mm	44.9mm	55.9mm	68.5mm
Overall Cable Diameter "A" (Max)	15.9mm	20.8mm	27.2mm	33.5mm	39.4mm	52.6mm	65.3mm	77.5mm
Across Flats "B" (Max)	22.5mm	26.0mm	34.5mm	41.5mm	50.2mm	62.1mm	79.2mm	92.4mm
Across Corners "B" (Max)	24.9mm	29.2mm	38.3mm	46.5mm	56.0mm	68.2mm	86.5mm	102.8mm

*40mm & upwards contain 1 of each item