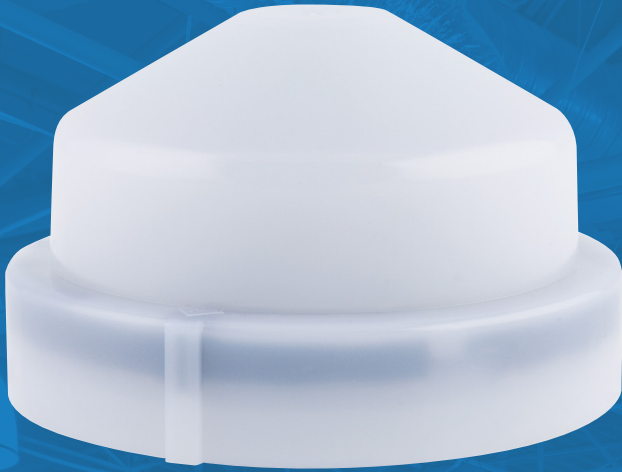
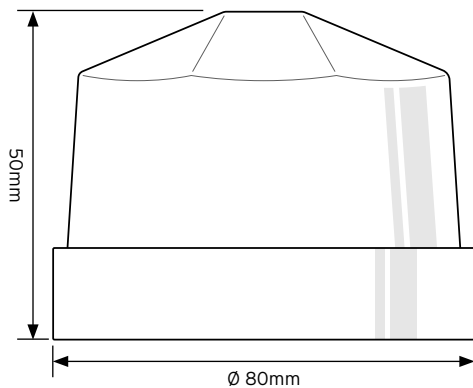


## TS12A Photo Electric Switch Cell



### Technical Drawing



### Technical Specifications

<b>Sensor Type</b>	Silicon Photodiode or CDS
<b>Voltage Range 50/60 Hz</b>	240 Vac
<b>On / Off Levels</b>	70/105 Lux
<b>Switching Ratio</b>	<1:4
<b>Rated Load</b>	1000W HPS/MH, 600W LED@220V 1200W Incandescent
<b>Operating Temperature</b>	-30 C to +70 C
<b>Load Switching Capacity Current</b>	5 Amps
<b>Max. Power Factor Corr</b>	60 MFD
<b>Typical Switching Delay</b>	10-60 sec
<b>Enclosure material</b>	UV Stabilised Polycarbonate
<b>Power Consumption</b>	<1W
<b>IP Rating (mounted)</b>	IP65
<b>Number of Pins</b>	3
<b>Wall Plugs and Screws</b>	DIA 4mm fixing holes x2, 80mm Distance
<b>Fixing (where applicable hole dimensions)</b>	NEMA
<b>Test Cover</b>	Supplied
<b>Locking Plug</b>	Plug blade configuration meet requirements of ANSI C136.10-2010 where applicable
<b>Fail Mode</b>	Fail Off
<b>MOV Surge Protection</b>	Yes
<b>Standards</b>	BS 5972:1980