

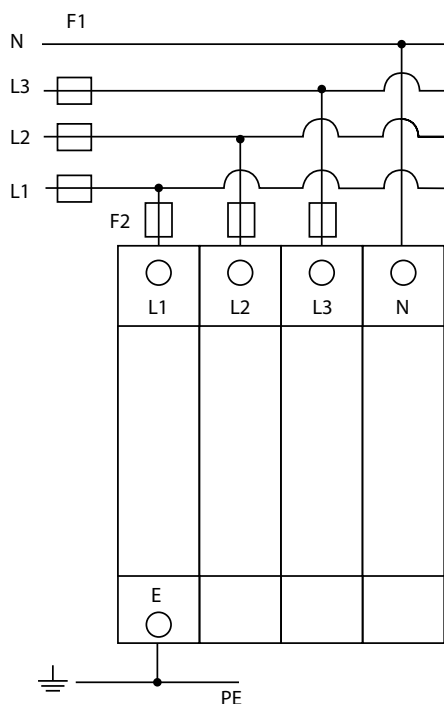
# SP12S-3PN/50KA

## Type 1+2 Surge Protection Device



A four module three pole and neutral Type 1+2 combined lightning and surge arrester with remote signal contact Suitable for use in incoming distribution panels where the risk of lightning strikes is high, particularly in buildings with a lightning protection system. Must be accompanied by downstream Type 2 surge protectors

### Standard Wiring Diagram



F1 > 63A then F2 is 63A  
Niglon MCB10C-63 is recommended

### Technical Specifications

Max. Continuous operating voltage	(Uc)	275 V~
Nominal Discharge current	8/20μs (kA)	20kA
Max. discharge current	8/20μs (kA) (Imax)	50kA
Voltage protection level (kV)	(Up)	1.5
MCB		63A TP C Curve

### Installation

This device is intended to be clipped to TS35 din rail  
The earth cable should be a minimum of 6mm  
Other cabling should be a minimum of 1.5mm and a maximum of 10mm  
Terminal torque should be between 1.2 and 1.5 Nm

### Remote Signal

Cabling should be a maximum of 1.5mm  
Contacts 11 and 12 closed indicates SPD is OK  
Contacts 11 and 14 open indicates SPD is OK  
Contacts 11 and 12 open indicates the SPD has tripped  
Contacts 11 and 14 closed indicates the SPD has tripped