

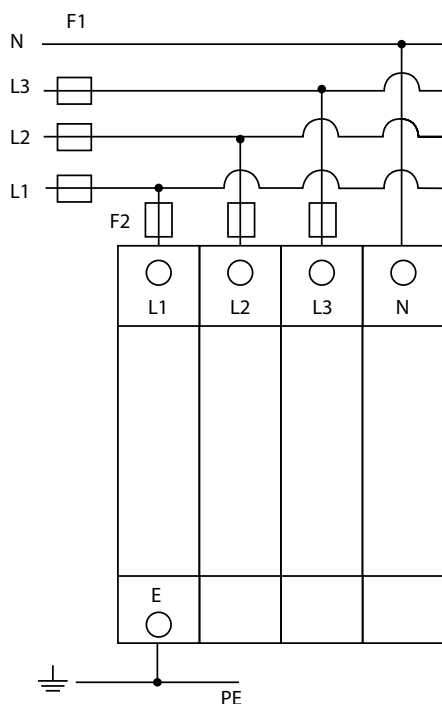
SP23S-3PN/C40KA

Type 2 Surge Protection Device



A compact two module three pole and neutral Type 2 combined lightning and surge arrester with remote signal contact. Suitable for use in distribution panels located downstream of Type 1 Surge arrestors, or distribution panels in areas with low exposure to lightning strikes

Standard Wiring Diagram



F1 > 63A then F2 is 63A
Niglon MCB10C-63 is recommended

Technical Specifications

Max. Continuous operating voltage	(Uc)	275 V~
Nominal Discharge current		20kA
8/20μs (kA)		
Max. discharge current	(Imax)	40kA
8/20μs (kA)		
Voltage protection level (kV)	(Up)	1.5
MCB		63A TP C Curve

Installation

This device is intended to be clipped to TS35 din rail
The earth cable should be a minimum of 6mm
Other cabling should be a minimum of 1.5mm
and a maximum of 10mm
Terminal torque should be between 1.2 and 1.5 Nm

Remote Signal

Cabling should be a maximum of 1.5mm
Contacts 11 and 12 closed indicates SPD is OK
Contacts 11 and 14 open indicates SPD is OK
Contacts 11 and 12 open indicates the SPD has tripped
Contacts 11 and 14 closed indicates the SPD has tripped