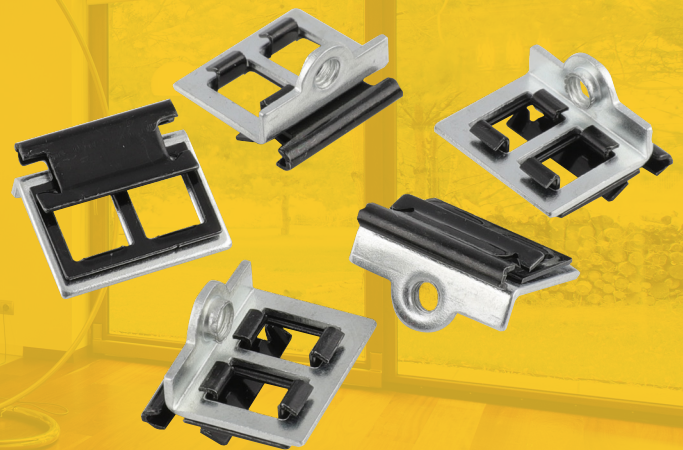


### BBC5

### Backbox Repair Clip



Back Box Repair Clip is a two part calibrated metal clip, designed to repair lug failures on metal back boxes, without the need to remove and replace the whole back box. This product is a time, labour, and cost saving solution; it is the most professional back box lug repair available on the market today.

#### Technical Specifications

<b>How it works</b>	Fully remove the damaged lug, clear external edge and straighten box side. Apply pressure and push to secure, by hand or with pliers. Do not strike or use hammers, as this will compromise and damage the component and do not over tighten screws on faceplate
<b>Usage</b>	Replace a broken lug in a metal back box.
<b>Kit contents</b>	A unique push together 2 piece clip system, overall dimensions 18mm x 8mm, 0.25mm. Comprising a sprung, calibrated and tensioned steel plate against a 1mm galvanised metal M3.5 thread, clips securely to a back box, allowing face plate adjustment and levelling.
<b>Secondary use</b>	British Standards and International Electrotechnical Commissions policies: BS 4662 BS EN 60670
<b>IPO Design Registration No.</b>	4033473

Back Box

Sprung Metal Clip

Screw thread brackets

