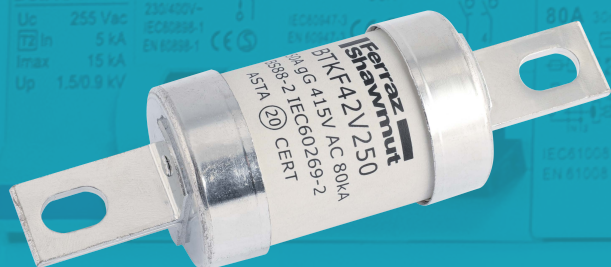


niGLON™

Circuit Protection

HRC Fuse B3

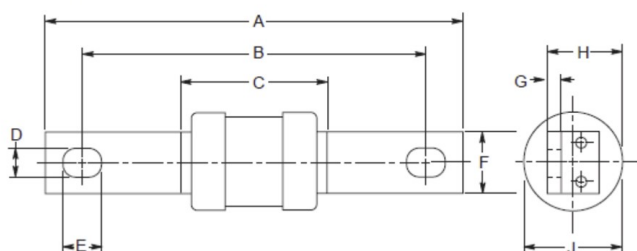
Industrial Ceramic B3



RCCB
Protected Circuits

Technical Drawing

Dimensional Data:



Dimensions - mm

Prod Code	Amp Rating	Pre-arcing	Total @ 415V	Total @ 550V	Nom Watts Loss	A	B	C	D	E	F	G	H	J
TKF250	250	200,000	340,000	480,000	18	136	111	47	9	12.5	19	3.2	22.5	31
TKF315	315	265,000	450,000	635,000	22	136	110	50	9	12.5	25.4	4.7	31	38

Technical Specifications

Rated Voltage	415V AC
Fuse Size	B3
Application	
Category	gG
High Rupture Capacity	Yes
Tag Type	Bolted
Tag Orientation	Centred
Standard	BS 88, IEC 60269